



RAILFLEX



RAILFLEX STORAGE

The best solution for maximising commercial space from floor to ceiling is Railflex. Specially designed by our team for light storage duties, Railflex shelves also allow you to store your heaviest items. Our HD system is more robust and meets the highest safety standards. Whether fixed or mobile, Railflex structures adapt to all types of spaces, even narrow ones, such as back stores and archive rooms. Both models, whether used together or separately, make your entire space more cost effective. The shelves can be installed at different heights allowing you to change the configuration at any time.

INDUSTRIAL FRAME

MATERIAL: PAINTED STEEL 186A

STANDARD DIMENSIONS:
12" - 14" - 15" - 16" - 18" - 22" - 24" DEPTH / HEIGHT: 60" - 144" (IN INCREMENTS OF 12")

SIDE REINFORCEMENTS ARE RIVETED. CLOSED SIDES ALSO AVAILABLE

HD POSTS: 116A PAINTED STEEL WITH DOUBLE FRONT IMPACT REINFORCEMENTS

INDUSTRIAL SHELF

MATERIAL: PAINTED STEEL 22 GA

STANDARD DIMENSIONS:
12" - 14" - 15" - 16" - 18" - 22" - 24" DEPTH
- WIDTH: 36", 42", 48" OTHER DIMENSIONS AVAILABLE ON DEMAND
- CAPACITY: 400 POUNDS WITH UNIFORMLY DISTRIBUTED LOAD. DOUBLE LOAD CAPACITY WITH HD SYSTEM

CARRIAGE

MATERIAL: GALVANIZED STEEL

STANDARD WIDTH: 24" - 28" - 30" - 32" - 36" - 44" - 48"
HEIGHT: 36", 48", 72", 84", 96"
- FOOT BRAKE & 2 ANTI-TILT BRACKETS ON ALL MOBILE SECTIONS
- CAPACITY: 1200 POUNDS PER MOBILE SECTION

STORAGE UNITS

STRUCTURE - RAILFLEX



FIXED UNIT WITH OPENED END FRAMES



FIXED UNIT WITH CLOSED END FRAMES



OPENED FIXED UNIT + HANGBAR + MASONITE BACK



CLOSED FIXED UNIT + HANGBAR + MASONITE BACK



CLOSED FIXED UNIT + POLE + DIVIDERS
SHELVES + MASONITE BACK



CLOSED FIXED UNIT + POLE + DIVIDERS
SHELVES + METAL BACK

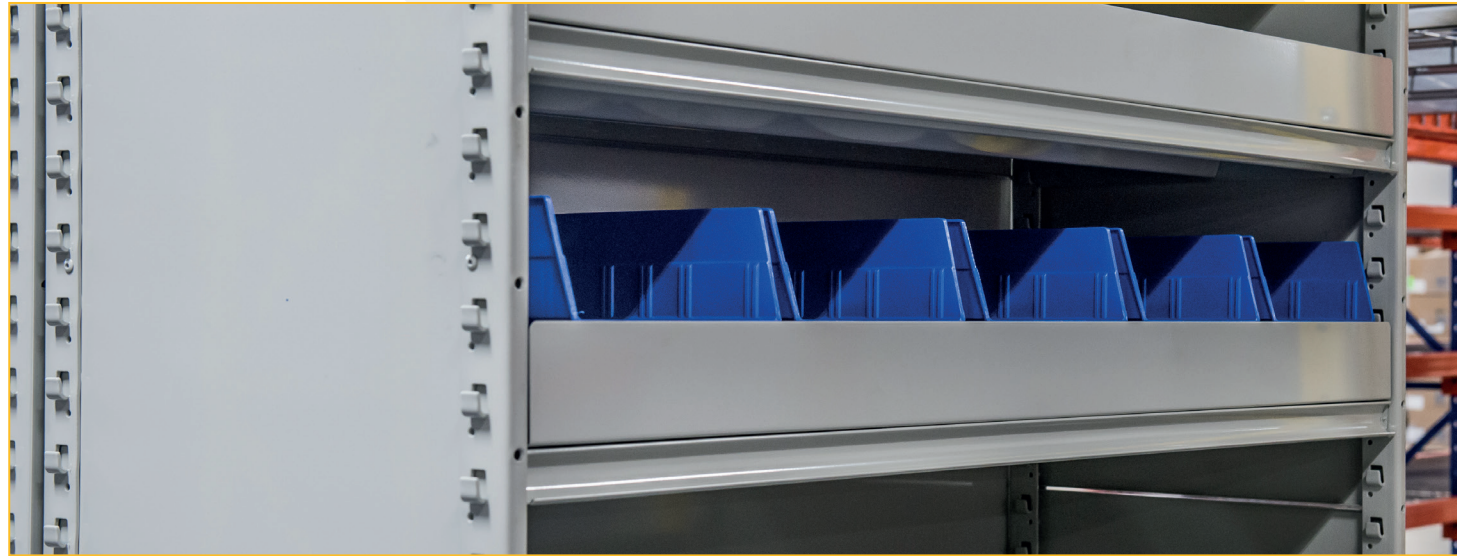


OPENED FIXED UNIT + DOORS
MASONITE BACK

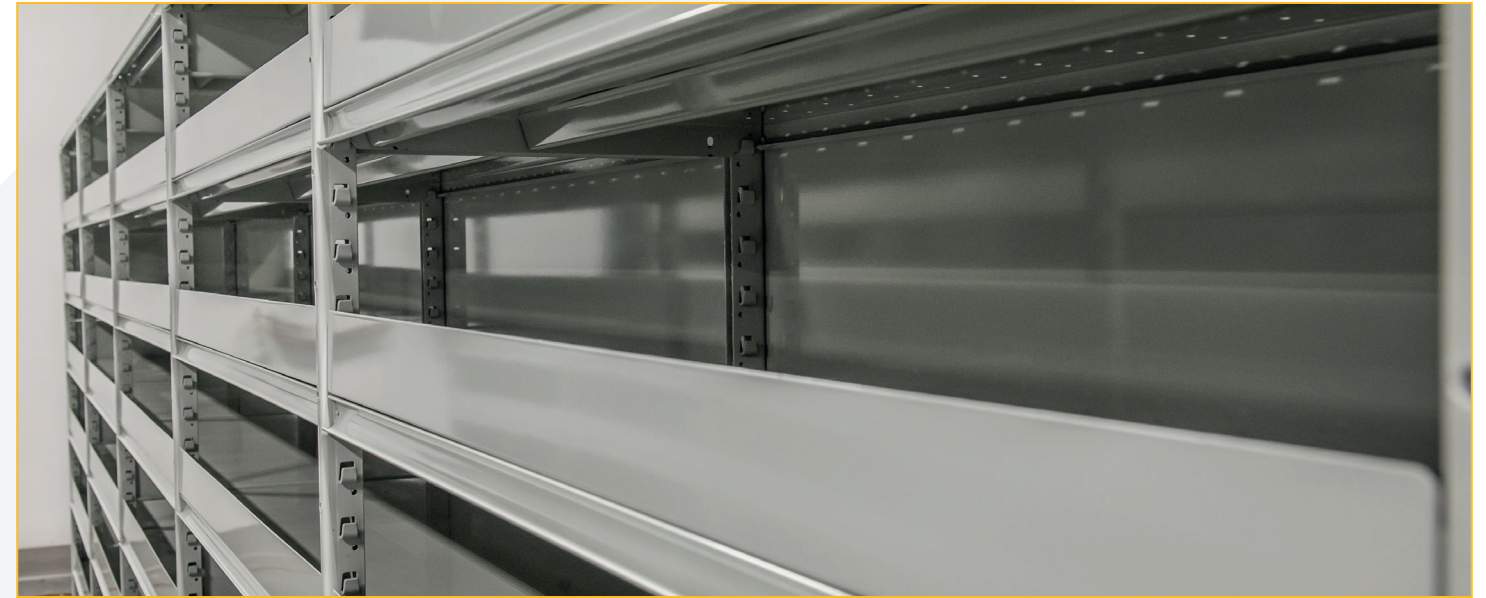


OPENED MOBILE UNIT + MASONITE BACK

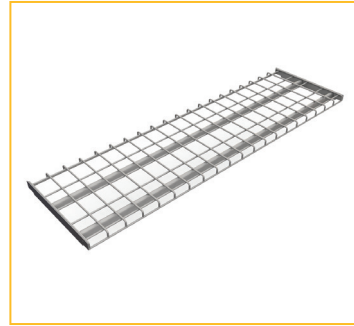
PORTFOLIO



PORTFOLIO



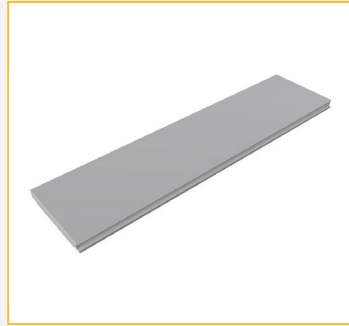
ACCESSORIES



WIRE SHELF
DEPTH : 12"-14"-15"-16"-18"-22"-24"
LENGTH : 36"-48"



METAL PERFORATED SHELF
DEPTH : 12"-14"-15"-16"-18"-22"-24"
LENGTH : 36"-42"-48"



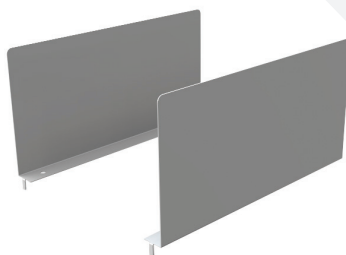
METAL SHELF
DEPTH : 12"-14"-15"-16"-18"-22"-24"
LENGTH : 24"-36"-42"-48"



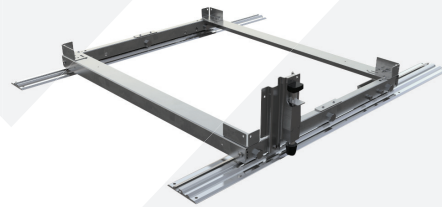
CROSSBAR FOR HOOKS
LENGTH : 36"-48"



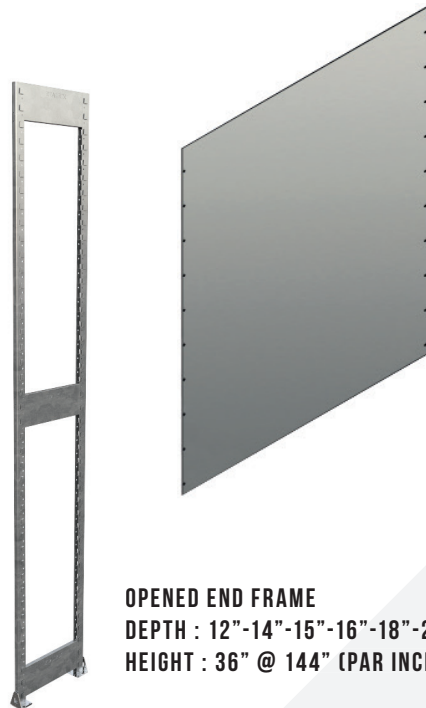
HANGBAR & BRACKETS
DEPTH : 12"-14"-15"-18"-24"
LENGTH : 36"-48"



SHELF DIVIDERS
HEIGHT : 6"
LENGTH : 12"-14"-15"-16"-18"-22"-24"



CARRIAGE, BRAKE, ANTI-TILT AND RAIL
DEPTH : 24"-28"-30"-32"-36"-44"-48"
LENGTH : 36"-48"-72"-84"-96"



OPENED END FRAME
DEPTH : 12"-14"-15"-16"-18"-22"-24"
HEIGHT : 36" @ 144" (PAR INCRÉMENT DE 12")

MASONITE OR METAL BACK
HEIGHT : VARIABLE
LENGTH : VARIABLE



CLOSED END FRAME
DEPTH : 12"-14"-15"-16"-18"-22"-24"
HEIGHT : 36" @ 144" (PAR INCRÉMENT DE 12")



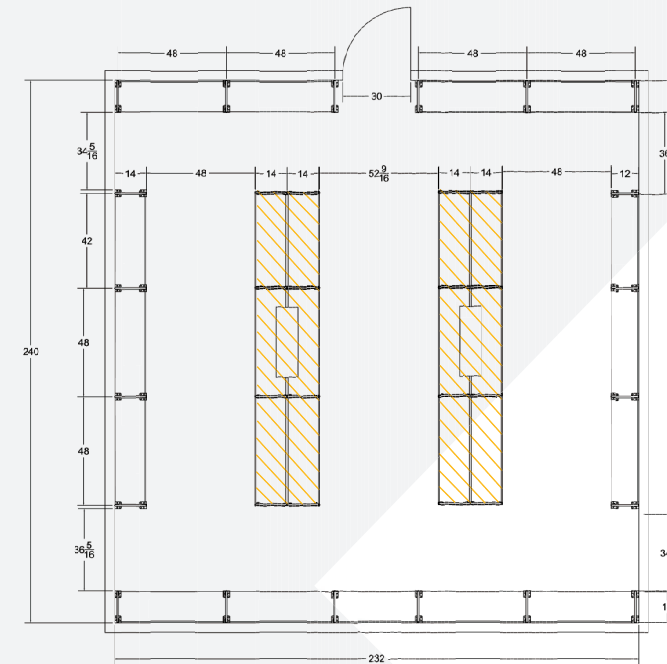
KICKPLATE
LENGTH : 36"-42"-48"

*RAIL LENGTHS ARE VARIABLE. CONTACT ONE OF OUR REPRESENTATIVES FOR MORE INFORMATION.

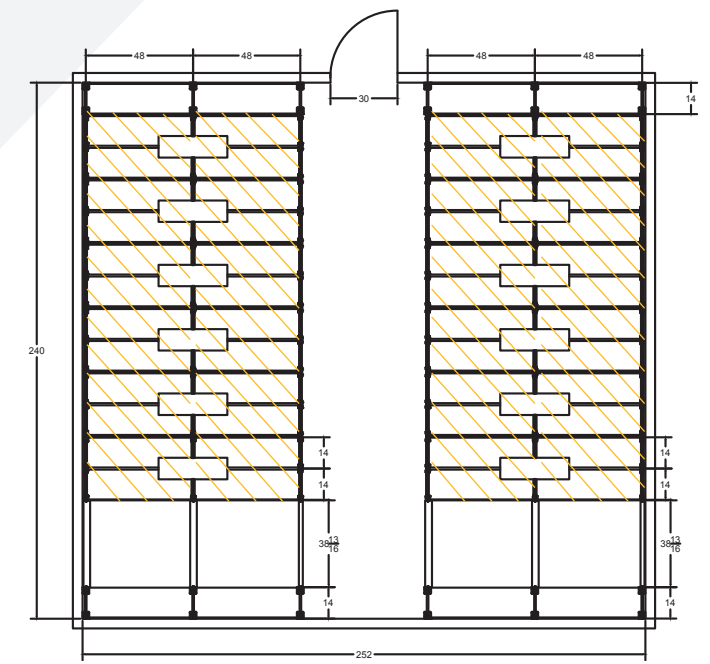
STORAGE

OPTIMIZATION PLAN (BEFORE/AFTER)

THE REDUCTION IN THE NUMBER OF WALKWAYS SIGNIFICANTLY INCREASES STORAGE SPACE.



100 LINEAR FOOT STORAGE
FLOOR PLAN WITH SELF-STANDING UNITS



224 LINEAR FOOT STORAGE
FLOOR PLAN WITH MOBILE UNITS

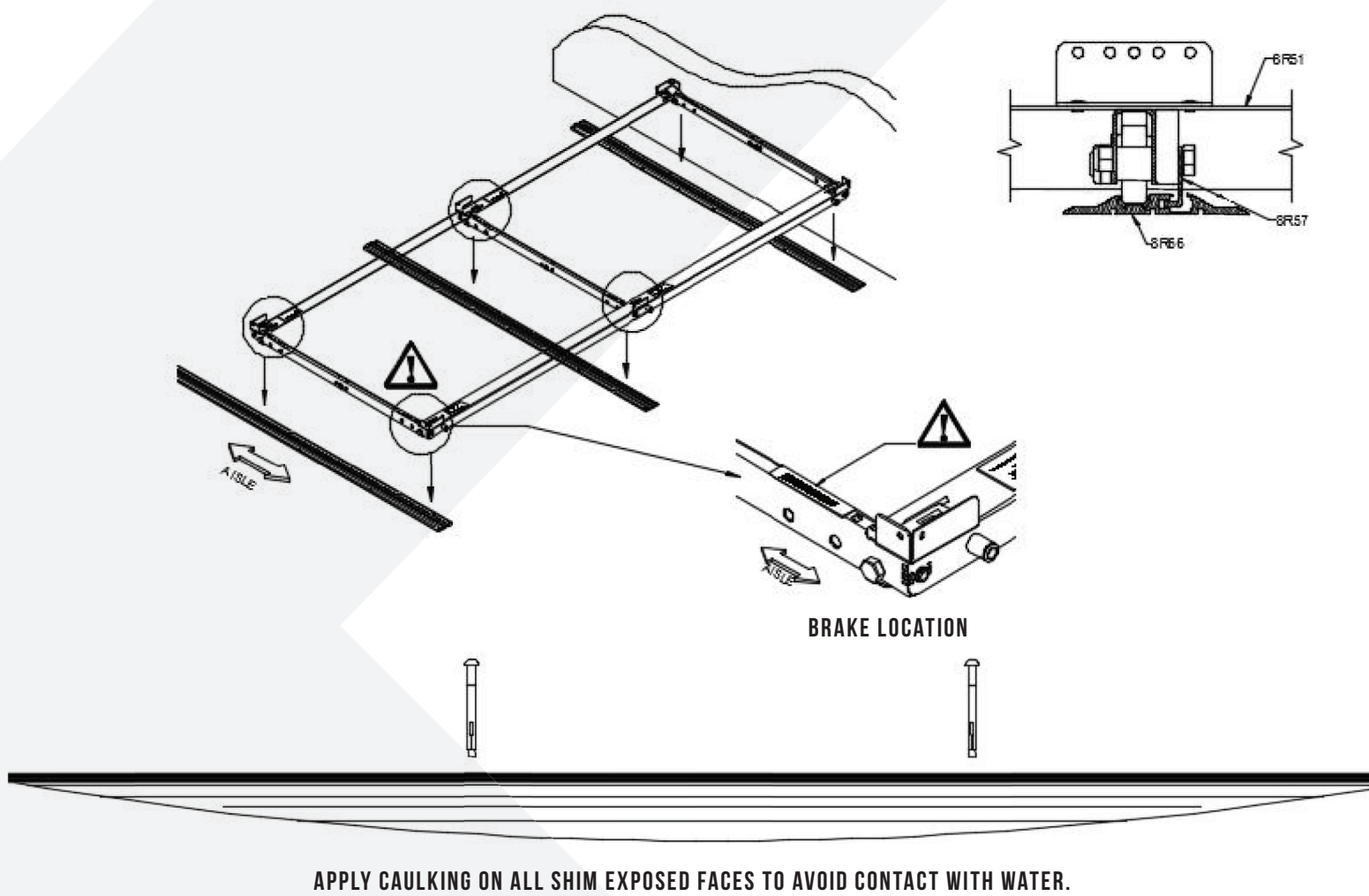
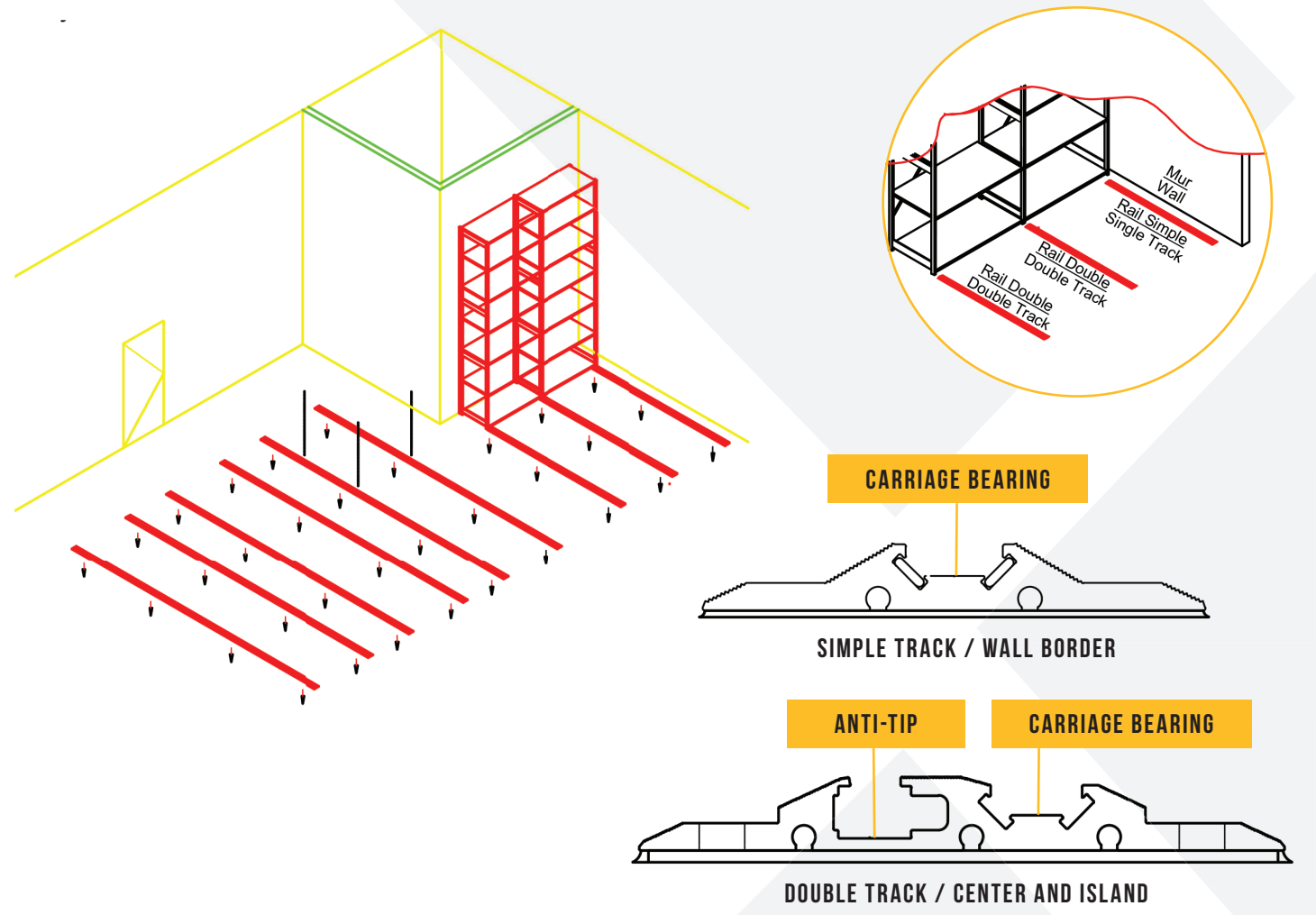


ASSEMBLY

ASSEMBLY

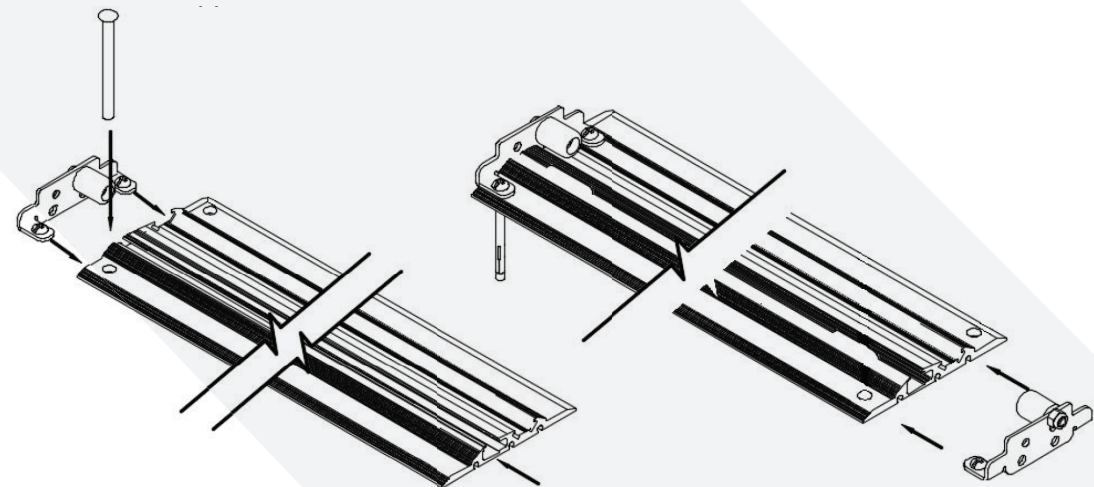
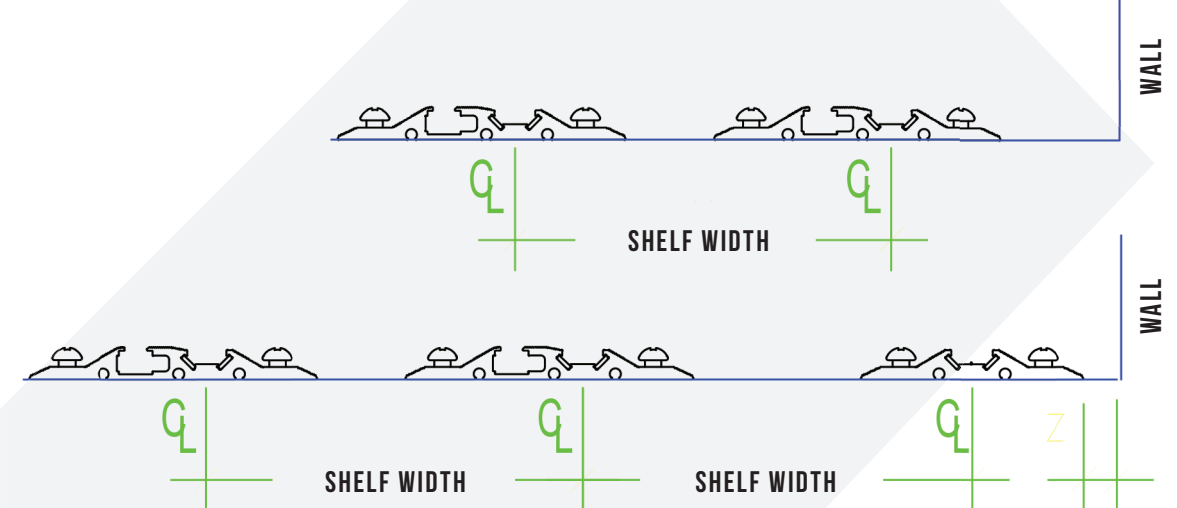
STEP 1 IDENTIFY THE TYPE OF RAIL AND POSITION ACCORDING TO THE PLAN PROVIDED.

STEP 3 ALIGN THE RAILS WITH THE EMPTY TROLLEY, LEVEL THE RAILS WITH THE WOOD BLOCKS.



STEP 2 INSTALL THE RAILS ON THE FLOOR.

ÉTAPE 4 INSTALL THE STOP ENDS WITH AN ANCHOR NAIL.

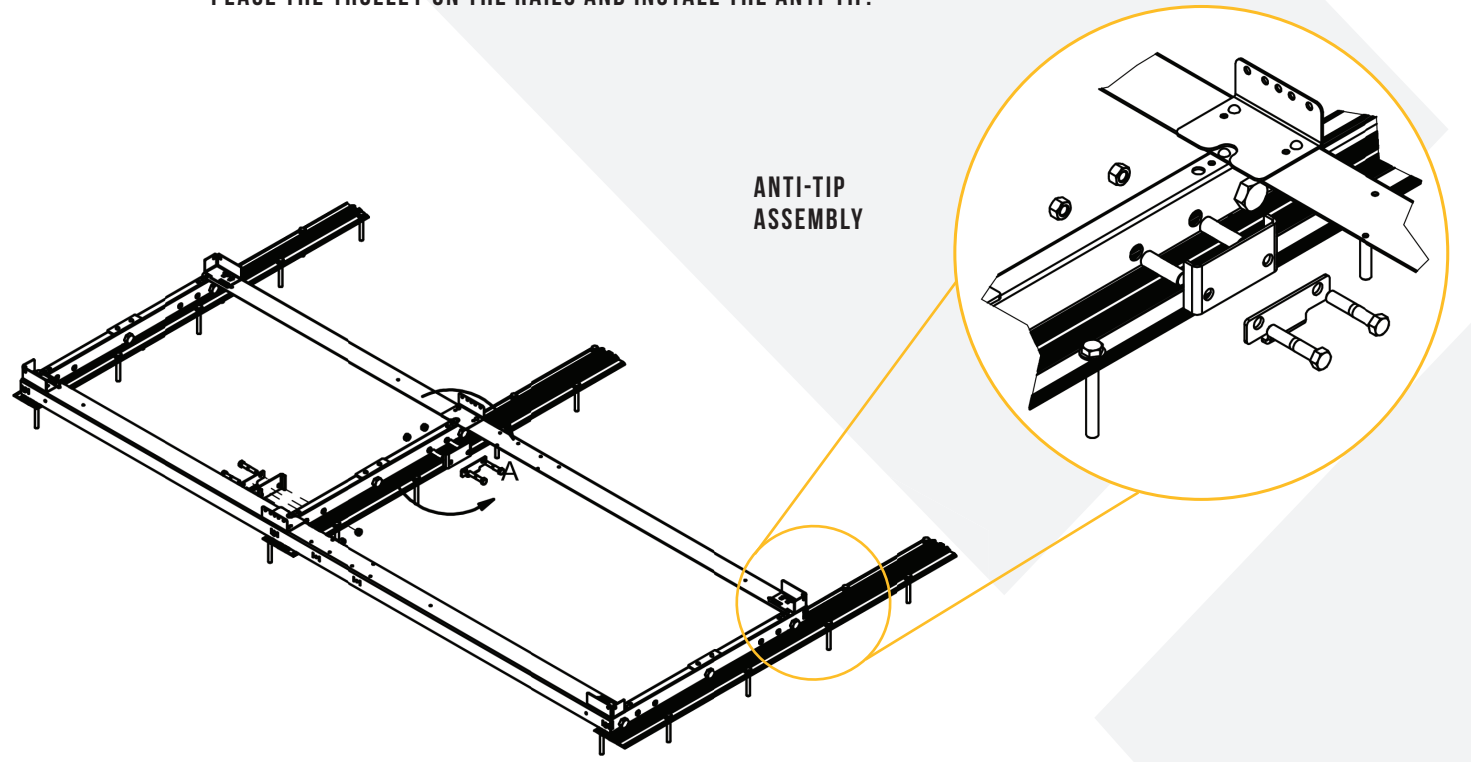


IMPORTANT

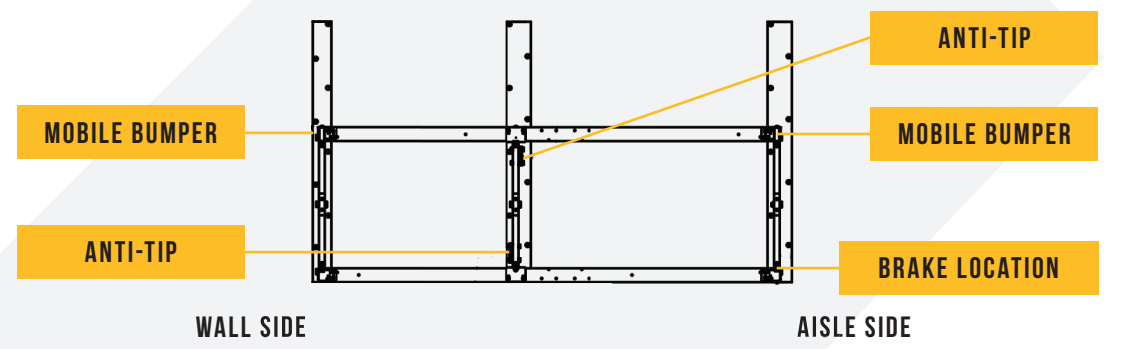
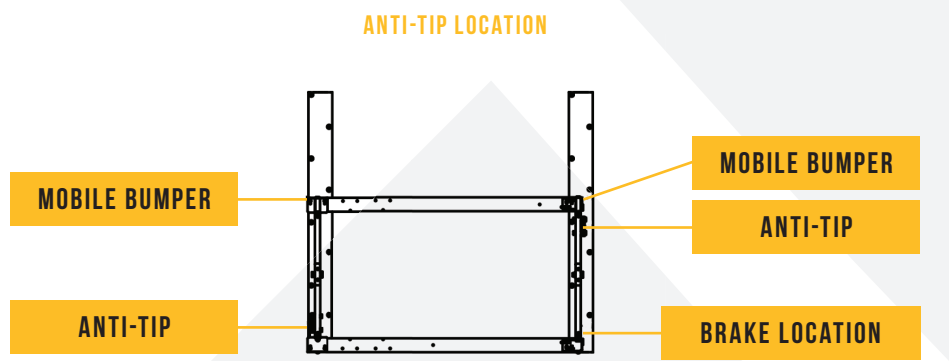
VERIFY THE ALIGNMENT 2 TIMES WITH THE AID OF THE TROLLEY. IF CORRECT, INSTALL THE ANCHORAGE NAILS AT EACH END OF THE RAIL.

ASSEMBLY

STEP 5 INSTALL ALL OTHER ANCHOR NAILS, PLACE THE TROLLEY ON THE RAILS AND INSTALL THE ANTI-TIP.



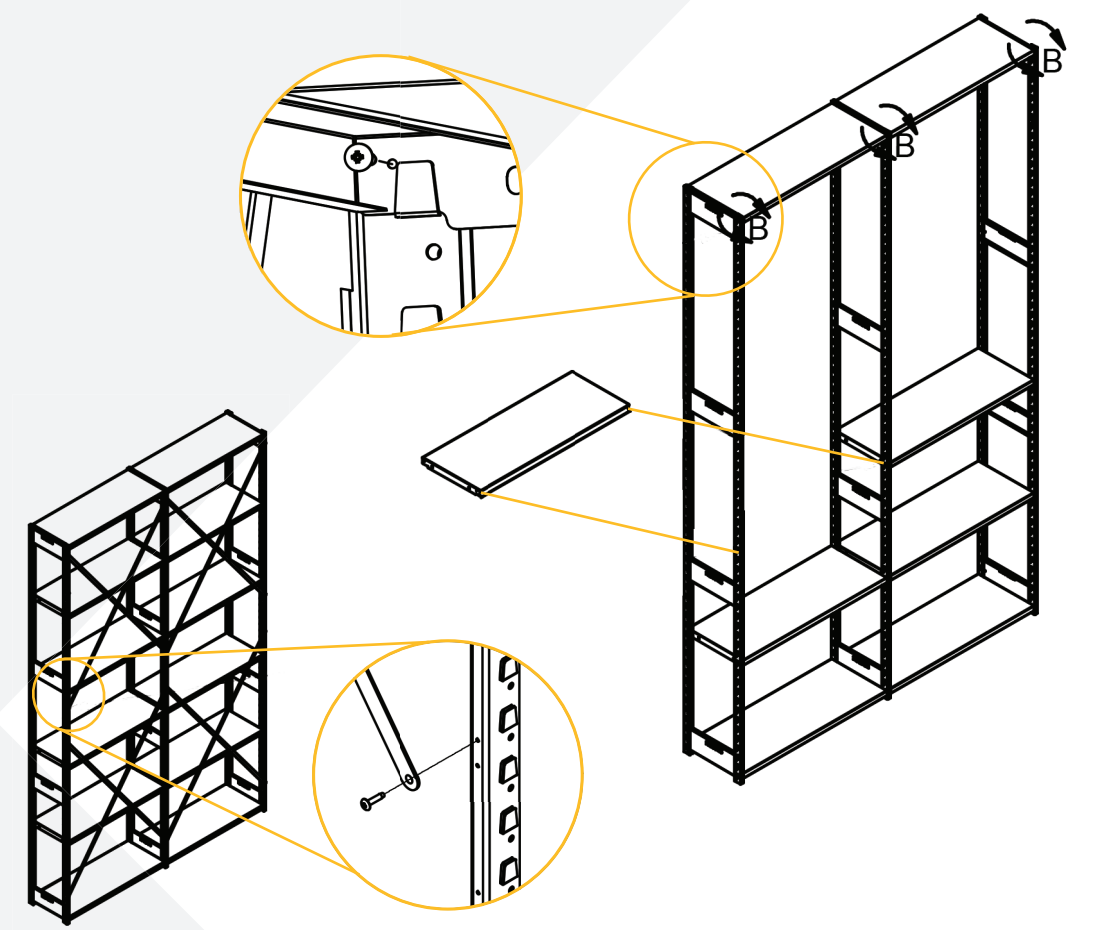
MOBILE TROLLEY
 MATERIAL: GALVANIZED STEEL
 (VARIABLE THICKNESS)
 AVAILABLE DIMENSIONS:
 DEPTH (Z): 24", 28", 30", 32", 48"
 LENGTH (X):
 37-1/4", 49-1/4", 73-1/4", 85-1/4", 97-1/4"
 -THE CASTER SUPPORTS ARE BOLTED. THE
 PLATES TO FIX THE END FRAMES ARE RIVETED.
 -GENERALLY EQUIPPED WITH A FOOT BRAKE
 AND TWO ANTI-TIP BRAKES.
 CAPACITY: 1200 LBS PER SECTION.



ASSEMBLY

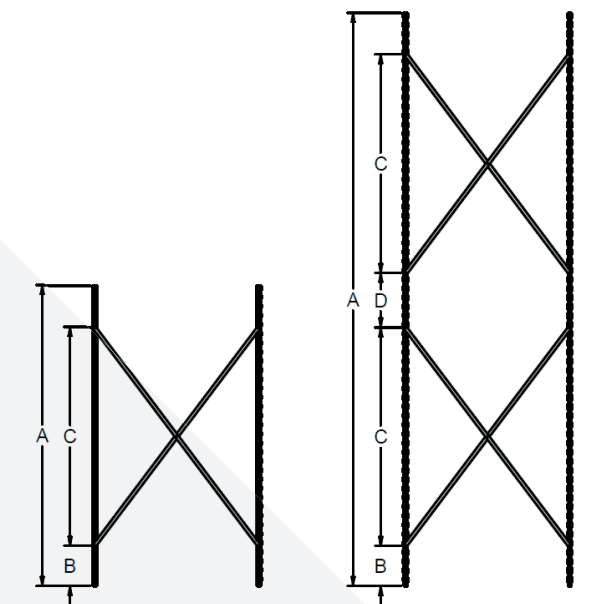
STEP 6 INSTALL THE TOP, BOTTOM AND MIDDLE SHELVING ON THE UPRIGHTS.

IMPORTANT
 INSERT THE TABLETS IN THE NOTCHES. SCREW THE TOP TABLET ONLY.



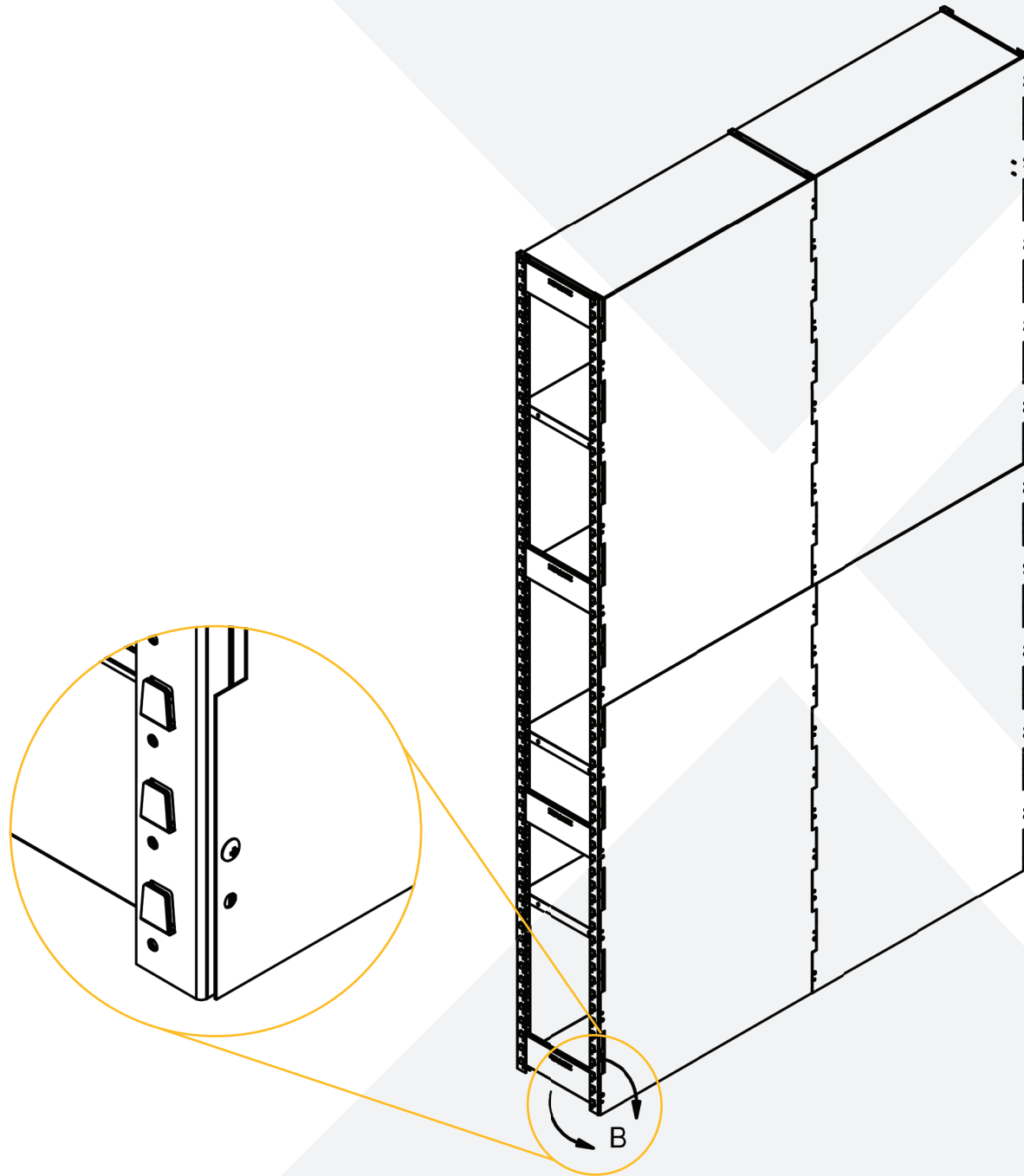
STEP 7 INSTALL BRACING IN THE BACK POSITION BY HEIGHT (SEE CHART)

A HEIGHT	B DIMENSION	C DIMENSION	D DIMENSION	QTY OF CROSSBAR
36"	1 13/16"	30"	-	1
48"	1 13/16"	30"	-	1
60"	7 13/16"	48"	-	1
72"	7 13/16"	48"	-	1
84"	7 13/16"	48"	-	1
96"	7 13/16"	48"	-	1
102"	7 13/16"	48"	-	1
108"	7 13/16"	48"	-	1
120"	7 13/16"	48"	12"	2
132"	7 13/16"	48"	12"	2
144"	7 13/16"	48"	12"	2



ASSEMBLY

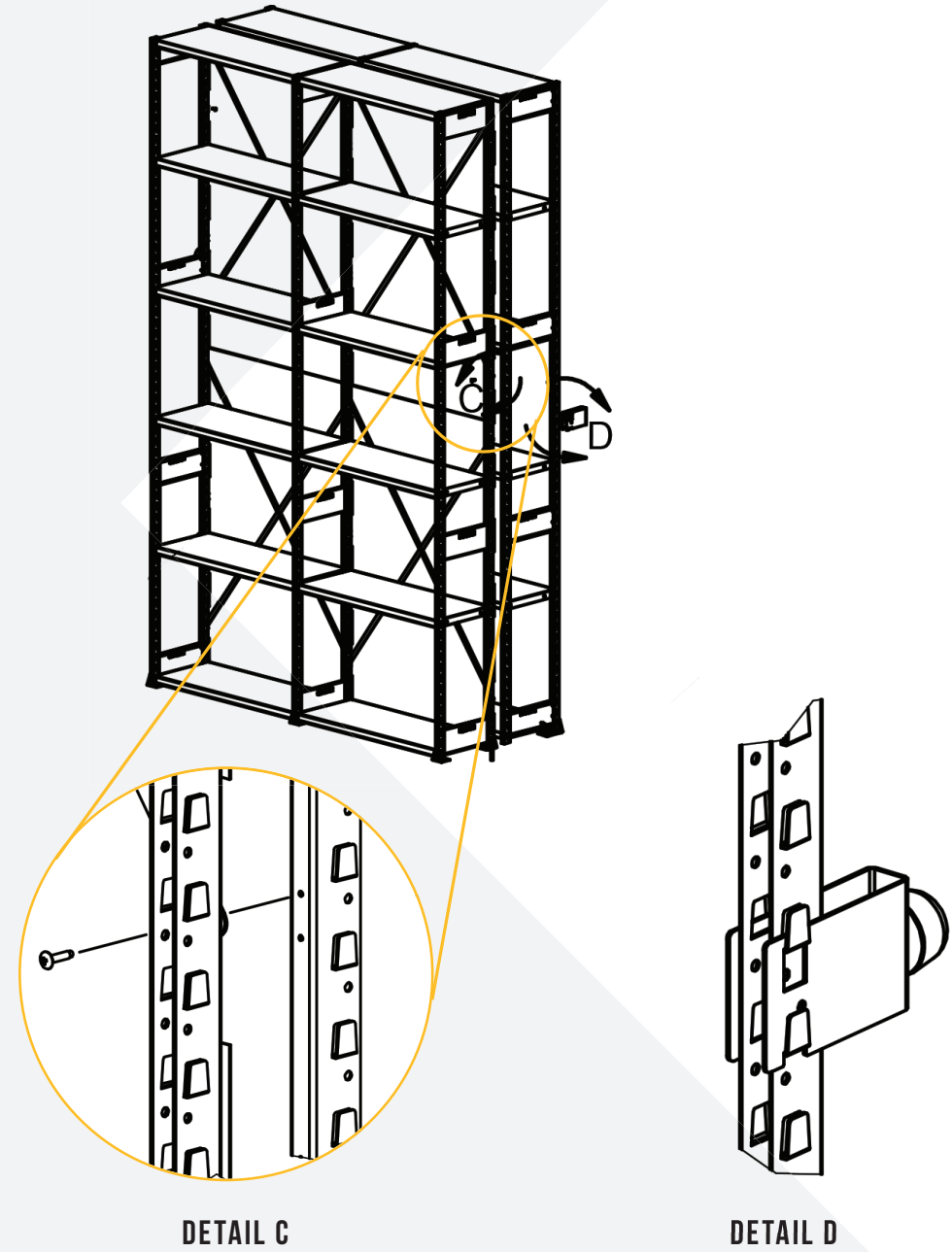
STEP 8 INSTALL BACKING PANEL IF REQUIRED



ASSEMBLY

STEP 9

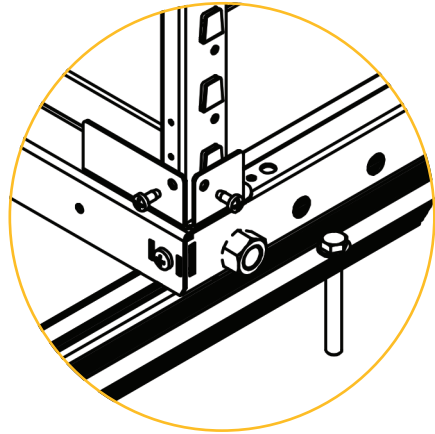
INSTALL BOTH UNITS TOGETHER BACK TO BACK WITH SELF TAPPING SCREW.



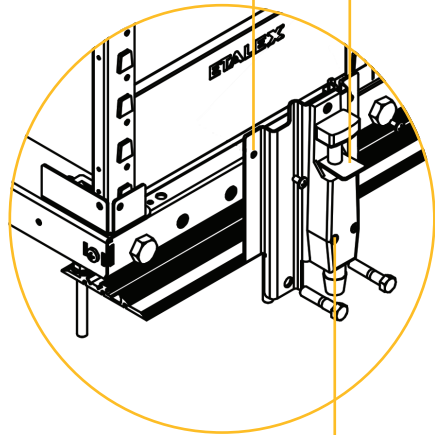
ASSEMBLY

STEP 10

2 PEOPLE ARE NEEDED TO LIFT THE RACKING AND DEPOSIT ON THE TROLLEY



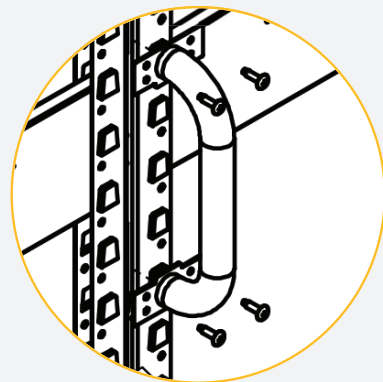
FIX THE FRAMES ON THE TROLLEY WITH SELF TAPPING SCREW



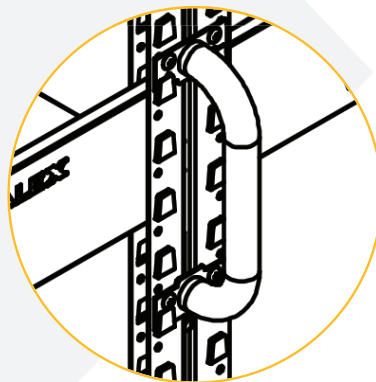
USE SELF TAPPING SCREWS TO SECURE THE UPPER PART OF THE BRAKE.

STEP 11

SLIDE THE HANDLE INTO THE COLUMN EXTRUSIONS AND SECURE IN PLACE WITH SELF TAPPING SCREWS NO10 X 3/4"L.



DETAIL G



ASSEMBLED VUE

NOTES

Series of horizontal lines provided for writing notes.



CONTACT US



8501, Jarry Street East,
Montreal, QC H1J 1H7
T 514 351-2000
TF 1 800 351-3125



1299, Marie-Victorin,
St-Bruno, QC J3V 6B7
T 450 653-1299
TF 1 888 224-BONI



5151, Industriel Boulevard,
Montreal, QC H1G 3H2
T 514 325-9892
TF 1 877 525-9892



FACEBOOK/SJM



LINKEDIN/SJM

MADE IN CANADA