



SJM GROUP

ETALEX™
Member of SJM group

EQUIPMENT
BONI
Member of SJM group

FORMA FIL
Member of SJM Group

S SERIES



THE S SERIES

The “S” Series really delivers by combining a multi-part post with unbeatable rigidity. Available with either high base 7” or low base with detachable base shelf and our ingenious locking assembly. As a result, it costs a lot less for you to change your aisle layouts. The backs are made of solid or perforated masonite and are available in the most popular colours. From dollar stores to supermarkets, it’s an excellent choice. The best store shelves systems for your business.

TECHNICAL SPECIFICATIONS

POST HEIGHT: 48”- 120” (IN INCREMENTS OF 6”)

BASE SHELF: 6”- 30” DEEP (IN INCREMENTS OF 2”)

WIDTH: 24”- 48” (IN INCREMENTS OF 6”)

**BASE SHELF HEIGHT:
5” H. (FROM FLOOR TO THE TOP OF THE LOW BASE SHELF)
7 1/4” H. (FROM FLOOR TO THE TOP OF THE HIGH BASE SHELF)**

REAR BACK OPTIONS: MASONITE (PLAIN OR PERFORATED), WIRE MESH & SLATWALL

OPTIONAL BACKS



PERFORATED MASONITE



PLAIN MASONITE



SLATWALL

BASE SHELF OPTIONS

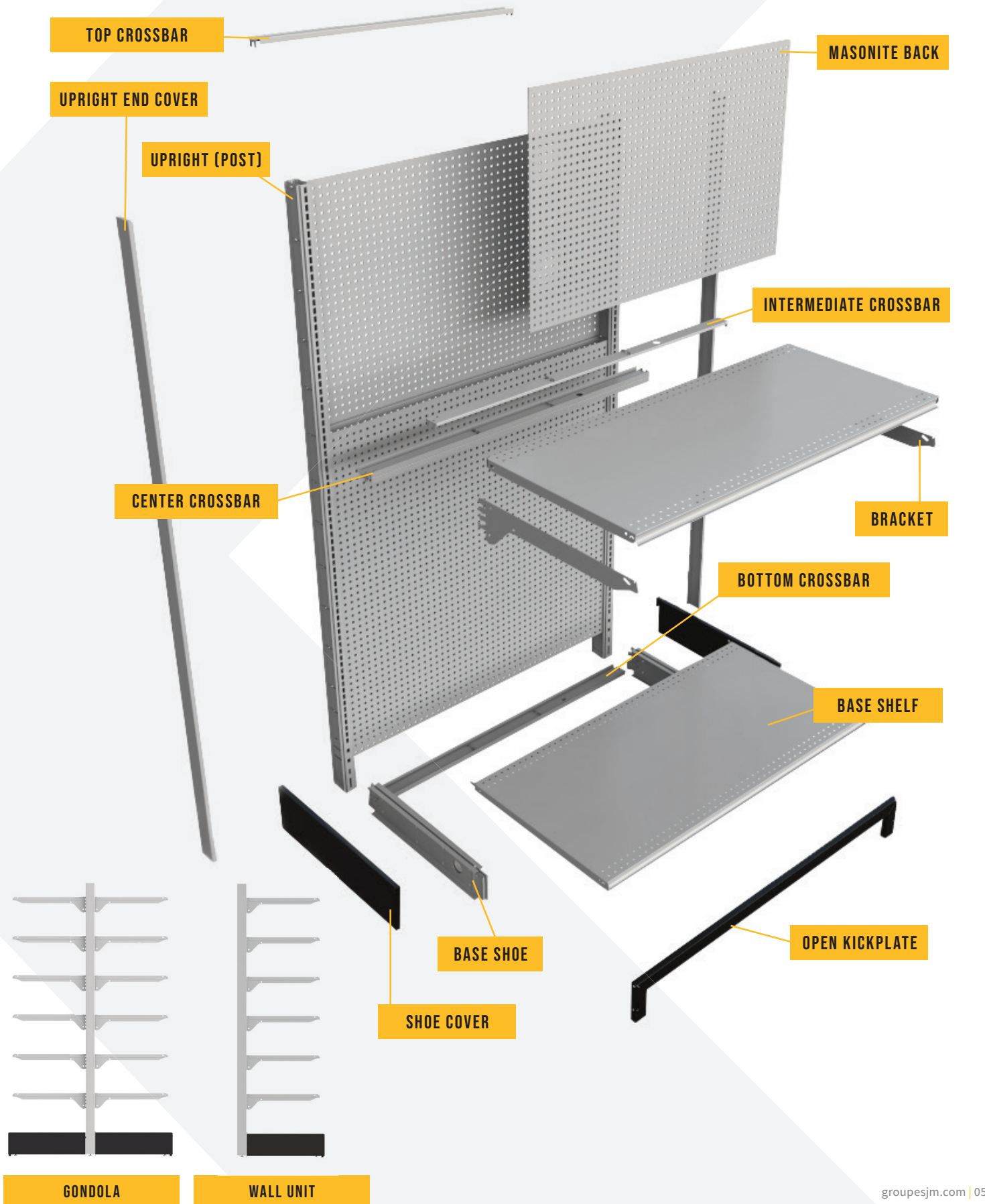


OPEN KICKPLATE



CLOSED KICKPLATE

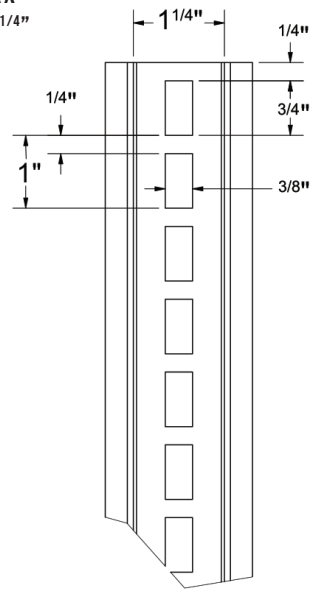
STRUCTURE - S SERIES



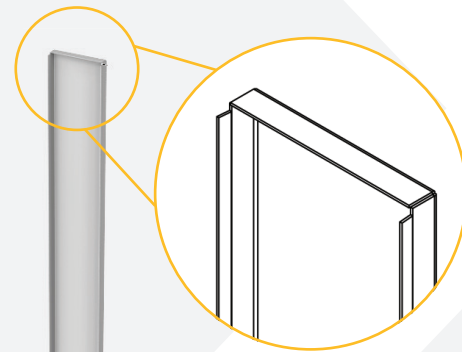
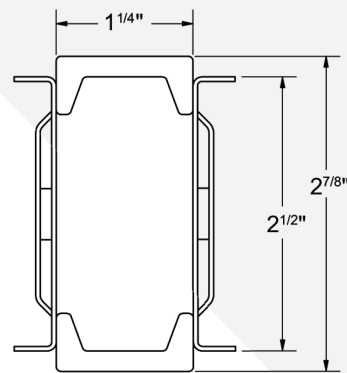
ASSEMBLY

HD POST

ITEM: 2010453XX
WIDTH: 2 7/8" X 1 1/4"



UPRIGHT END COVER



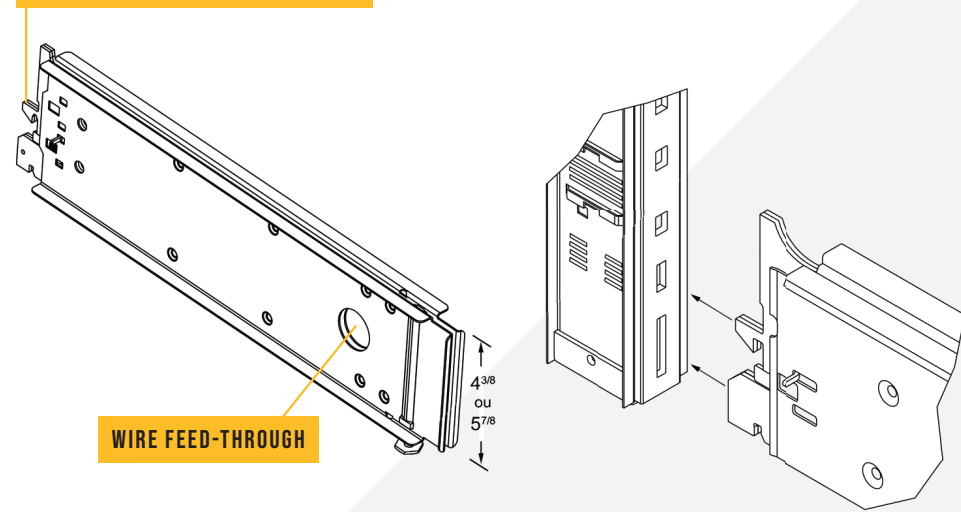
IN INCREMENTS OF 6"
36" TO 96"
+
108"
ITEM: 201010XX

END CAP REQUIRED ONLY ON END POLES.

SHOE

ITEM: 2040101XX ITEM: 2040100XX
HEIGHT: 4 3/8" HEIGHT: 5 7/8"

AUTO-BLOCKING SAFETY PIN

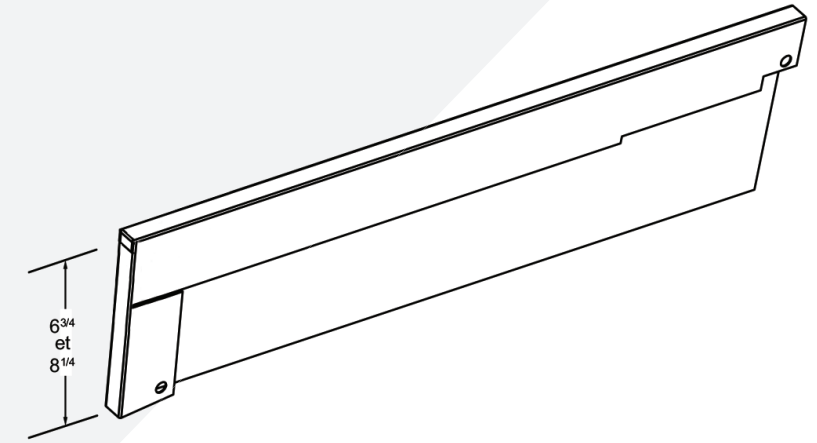


REMOVABLE SHOE WITH AUTO-BLOCKING SAFETY PIN AND WIRE FEED.

ASSEMBLY

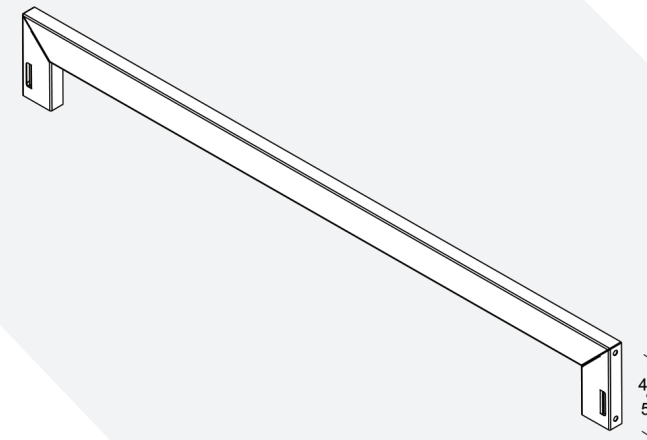
SHOE COVER

ITEM: 2040410XX RIGHT / 2040411XX LEFT
HEIGHT: 6 3/4" (BOTTOM)
ITEM: 2040400XX RIGHT / 2040401XX LEFT
HEIGHT: 8 1/4" (TOP)



OPEN KICK PLATE

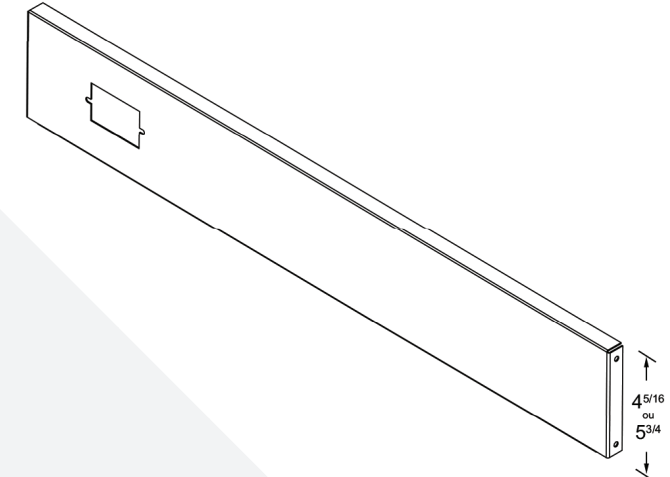
ITEM: 2050151XX = 6 3/4" (BOTTOM) / 2050150XX = 8 1/4" (TOP)



OPEN KICK PLATE FOR EASY CLEANING UNDER THE SHELF.

CLOSED KICK PLATE

ITEM: 2050101XX = 6 3/4" (BOTTOM) / 2050100XX = 8 1/4" (TOP)

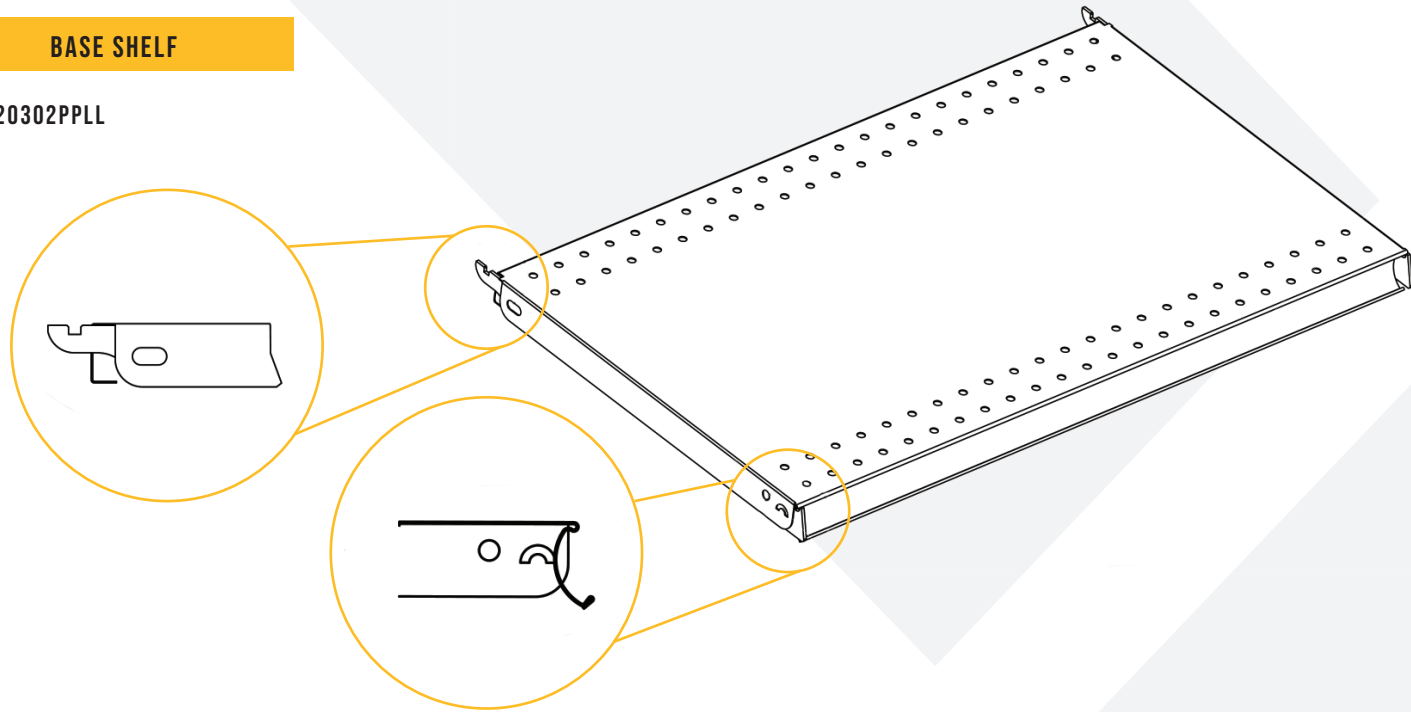


CLOSED KICK PLATE (WITH HOLE FOR ELECTRIC PLUG).

ASSEMBLY

BASE SHELF

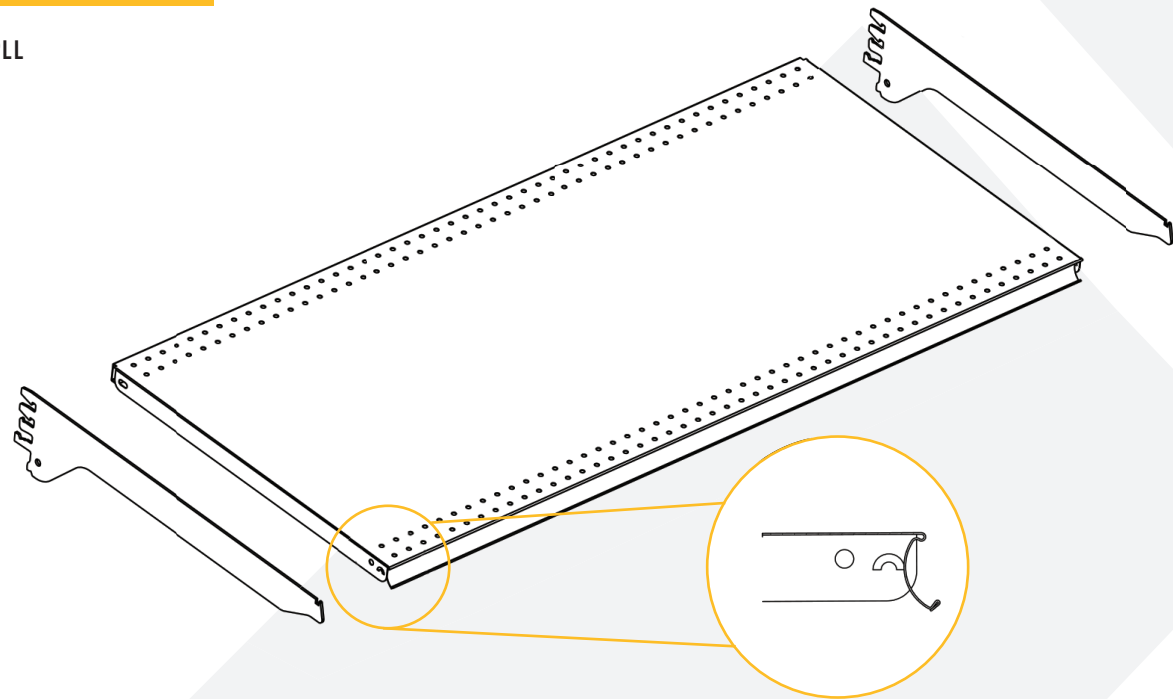
ITEM: 20302PPLL



COMES WITH WELDED BACK FASTENERS. STANDARD 1 1/4" LABEL HOLDER AND FOUR ROWS OF HOLES FOR DIVIDERS.

BASE SHELF

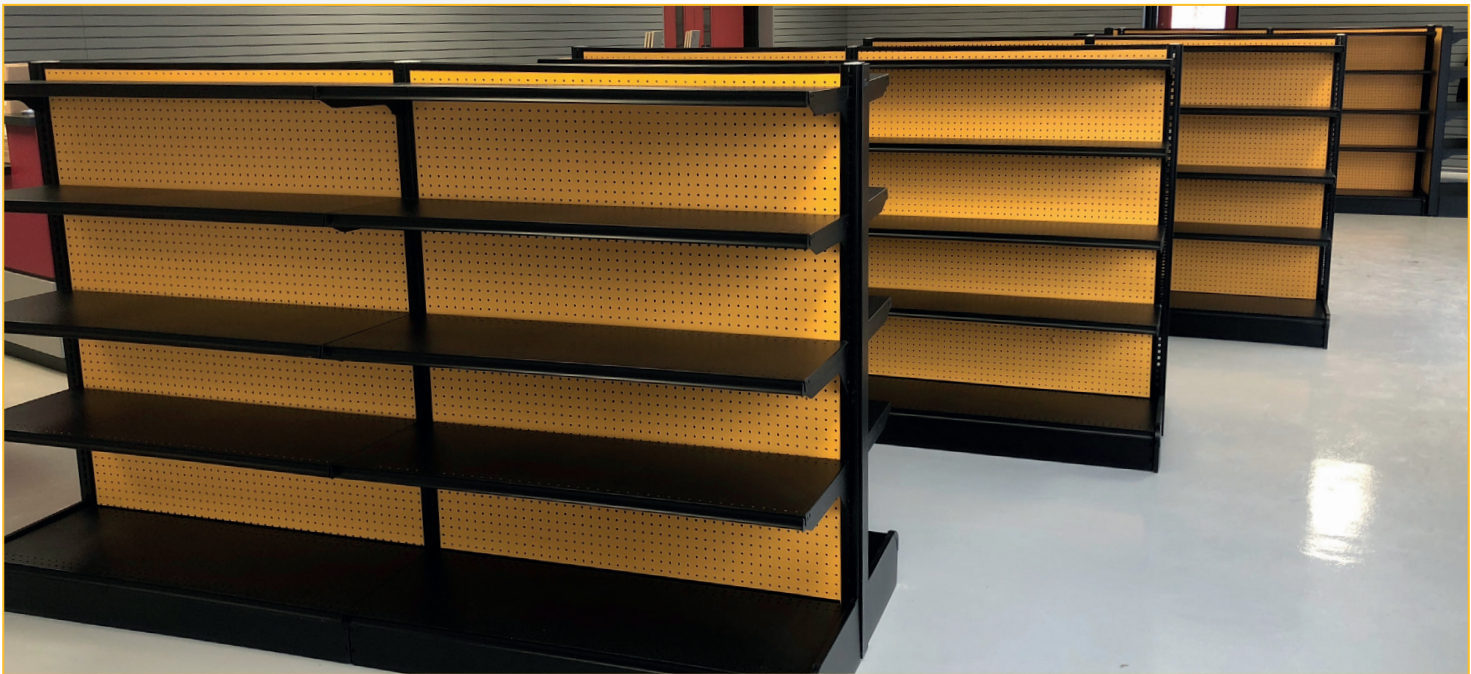
ITEM: 00301PPLL



BRACKET NOT INCLUDED. SHELF WITH WELDED REINFORCEMENTS. STANDARD 1 1/4" LABEL HOLDER. OPTION WITH WELDED SUPPORTS AVAILABLE.

BRACKETS

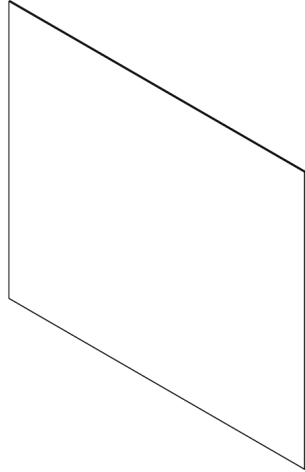
| | | 2 POSITION BRACKET | | | | |
|----------------|----------------|-----------------------|--------------|-----------|--------------|-----------|
| | | GRANDEUR | CODE PRODUIT | ÉPAISSEUR | | |
| 11 GA (0.121") | LENGTH | 6" | 210010006 | 0.121" | | |
| | | 8" | 210010008 | 0.121" | | |
| | | 12" | 210010012 | 0.121" | | |
| | | 3 POSITION BRACKET | | | | |
| 12 GA (0.099") | LENGTH - 3/32" | 10" | 210020010 | 0.099" | | |
| | | 12" | 210020012 | 0.099" | | |
| | | 14" | 210020014 | 0.099" | | |
| | | 3 POSITION BRACKET | | | | |
| 12 GA (0.099") | LENGTH + 1/16" | 16" | 210020016 | 0.099" | | |
| | | 18" | 210020018 | 0.099" | | |
| | | 20" | 210020020 | 0.121" | | |
| | | 22" | 210020022 | 0.121" | | |
| | | 24" | 210020024 | 0.121" | | |
| | | 26" | 210020026 | 0.121" | | |
| | | 1 POSITION HD BRACKET | | | | |
| 11 GA (0.121") | LENGTH + 1/4" | #LASER | REV | LENGTH | PRODUCT CODE | THICKNESS |
| | | SUPP-210050022-36X | | 22" | 210050022 | 0.121" |
| | | | | 24" | 210050024 | 0.121" |
| | | | | 26" | 210050026 | 0.121" |
| | | 210050028RA-36X | A | 28" | 210050028 | 0.121" |
| | | 210050030RA-36X | A | 30" | 210050030 | 0.121" |
| | | 210050036RA-28X | A | 36" | 210050036 | 0.121" |



ASSEMBLY

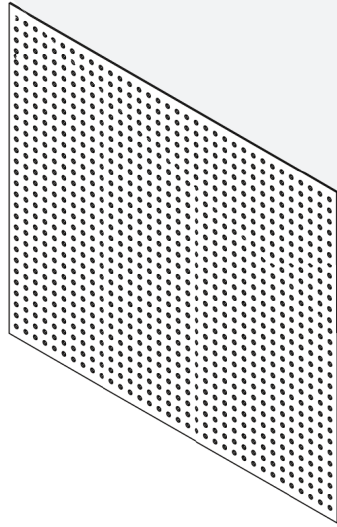
PLAIN MASONITE BACK

ITEM: PLB05 HH LL
THICKNESS = 1/4"



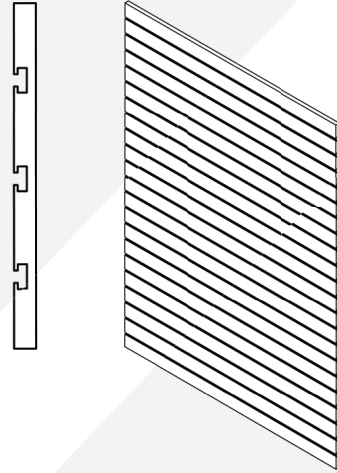
PERFORATED MASONITE BACK

ITEM: PEB05 HH LL
THICKNESS = 1/4"



SLATWALL BACK

HEIGHT = NOMINAL - 65/8"
LENGTH = NOMINAL - 17/16"
THICKNESS = 3/4"



LENGTH: IN INCREMENTS OF 6" / 24" À 48"
HEIGHT: IN INCREMENTS OF 6" / 36" À 96" + 108", 120", 144"

GRID OF THE MASONITE CHART

| NOMINAL HEIGHT POST IN INCHES | NOMINAL HEIGHT 1 ST BACK IN INCHES | NOMINAL HEIGHT 2 ND BACK IN INCHES | TOP CROSS-BAR QUANTITY NEEDED | INTERMEDIATE CROSS-BAR QUANTITY NEEDED |
|-------------------------------|---|---|-------------------------------|--|
| 36" | 30" | - | - | 1 |
| 42" | 36" | - | - | 1 |
| 48" | 42" | - | - | 1 |
| 54" | 48" | - | - | 1 |
| 60" | 54" | - | - | 1 |
| 66" | 60" | - | - | 1 |
| 72" | 66" | - | - | 1 |
| 78" | 48" | 24" | 1 | 1 |
| 84" | 48" | 30" | 1 | 1 |
| 90" | 48" | 36" | 1 | 1 |
| 96" | 48" | 42" | 1 | 2 |
| 108" | 48" | 54" | 1 | 2 |
| 120" | 48" | 60" | 1 | 2 |
| 144" | 66" | 66" | 1 | 3 |

HEIGHT = NOMINAL - 1/8" / LENGTH = NOMINAL - 17/16" / THICKNESS = 1/4"

ASSEMBLY

| CROSS-BARS LENGTH: 24", 30", 36", 42", 48" | FOR MASONITE BACK | FOR SLATWALL BACK |
|--|---------------------|---------------------|
| TOP CROSS-BAR CLOSES THE TOP OF A SECTION | ITEM: 2070100XX | ITEM: 2070105XX |
| INTERMEDIATE CROSS-BAR TO SUPPORT THE BACK (HOLES FOR WIRING) | ITEM: 2070400XX | ITEM: 2070420XX |
| CENTER CROSS-BAR FOR BACK SECTION MASONITE ONLY. SERVES AS A SEAL BETWEEN THE PANELS | ITEM: 2070300XX | |
| INFERIOR CROSS-BAR SUPPORTS BACK AT THE BASE | ITEM: 2070200XX | ITEM: 2070230XX |

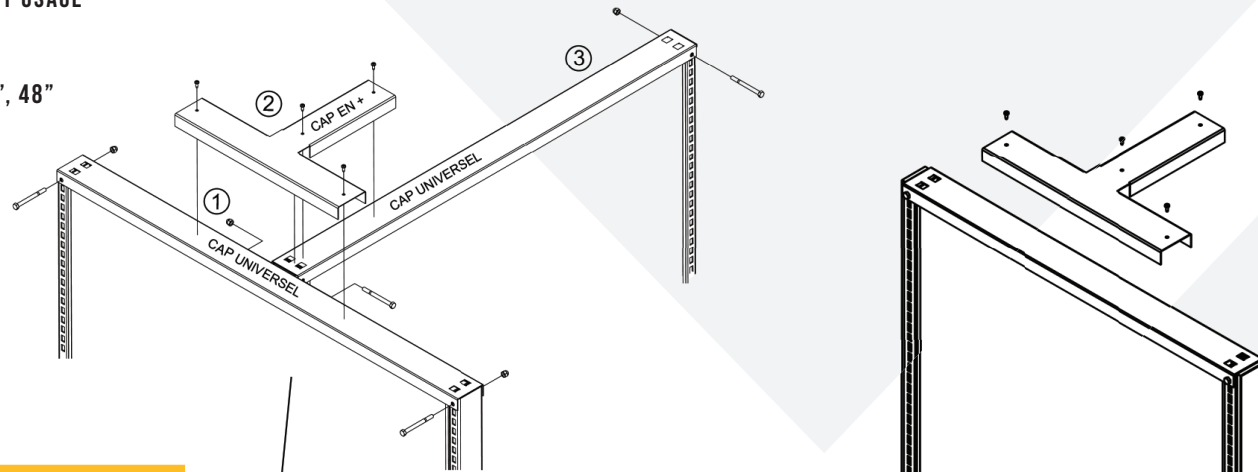
ASSEMBLY

«T» CAP

3 PIECES (INCLUDES # 1, 2 AND 3)

FOR HEIGHT OF 72"
AND/OR FOR HEAVY USAGE

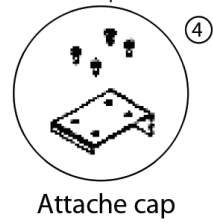
LENGTH :
24", 30", 36", 42", 48"



FINISHING CAP

2 PIECES (INCLUDES # 1, AND 4)

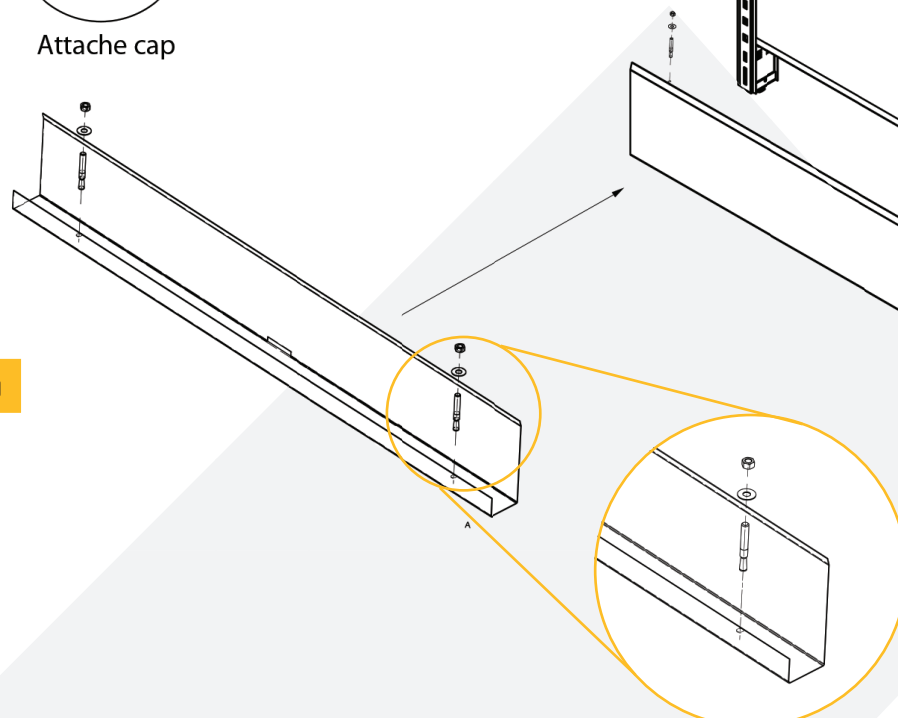
FOR HEIGHT OF 72"
AND/OR FOR LIGHT USAGE



FLOOR RETAINING BASEBOARD

FOR END OF WALL UNITS
0050810XX

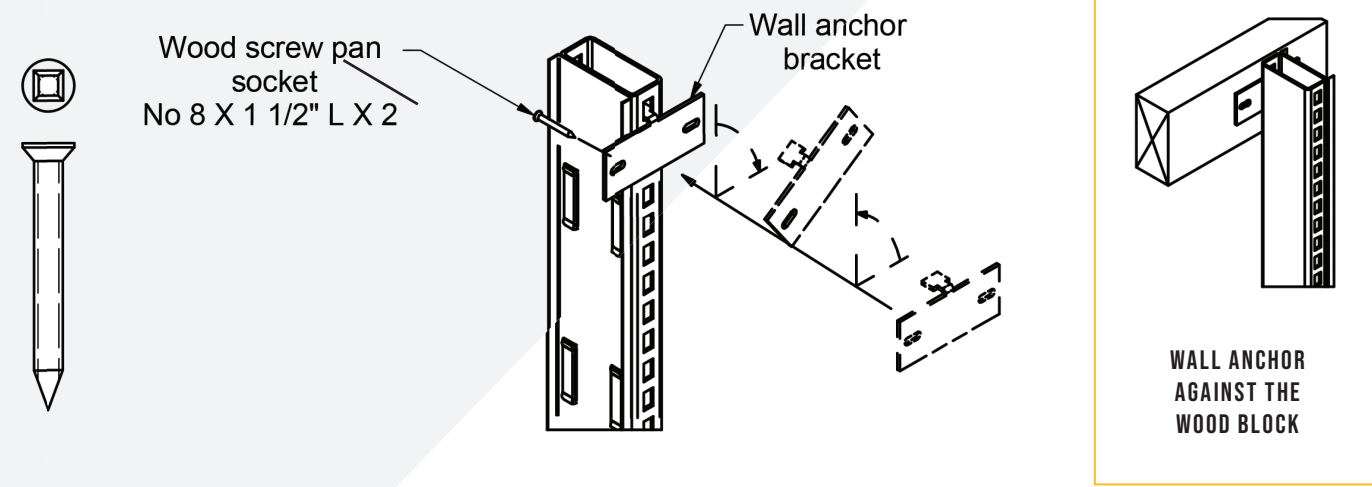
LENGTH :
24", 30", 36", 42", 48"



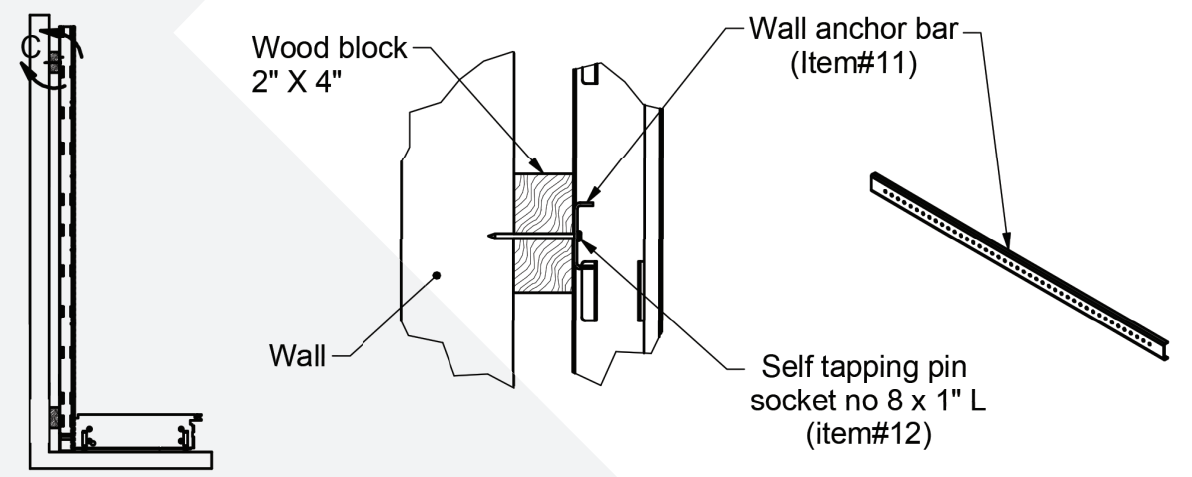
ASSEMBLY

WALL ANCHORING

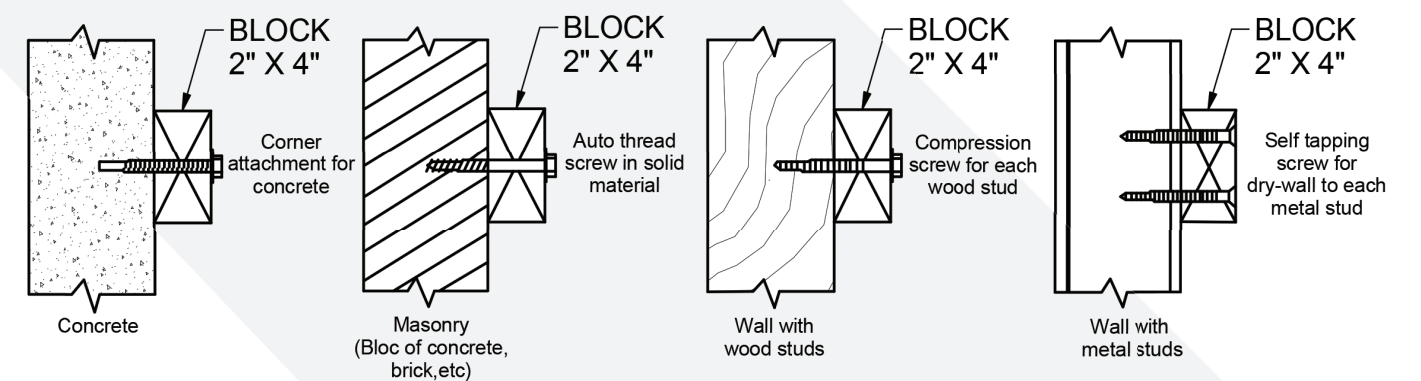
INSTALL THE WALL ANCHOR BRACKET AT THE TOP OF EACH POST. INSERT THE TOOTH OF THE ANCHOR IN THE FIRST SLOT FROM THE BACK BY TURNING IN THE POSITION AND SECURE IT WITH THE WOOD SCREW NO 8 X 1/2".



OTHER OPTION: THE WALL ANCHOR BAR IS REQUIRED FOR ALL WALL UNITS, TO LIMIT FORWARD DEFLECTION.



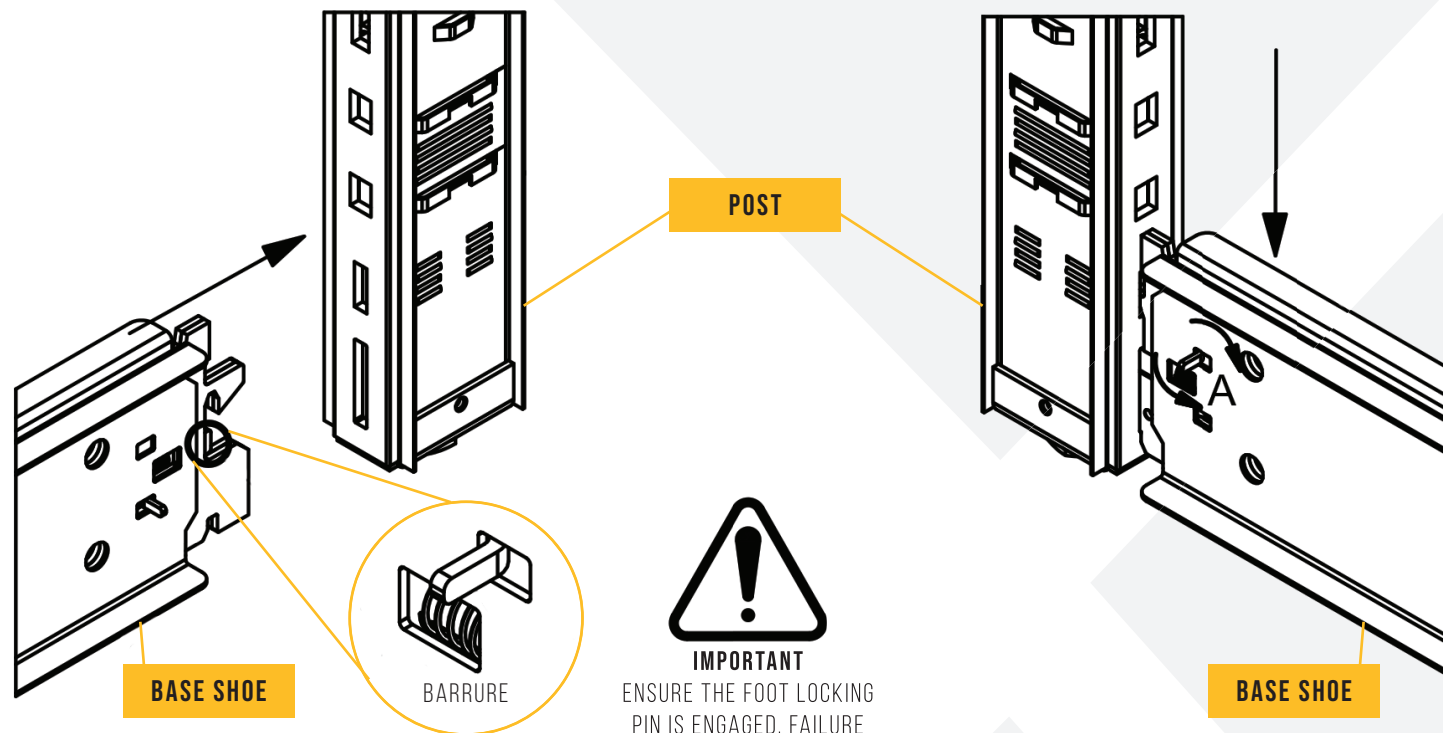
FIXING THE BLOCK TO THE WALL STUDS



ASSEMBLY

FOOT LOCKING PIN

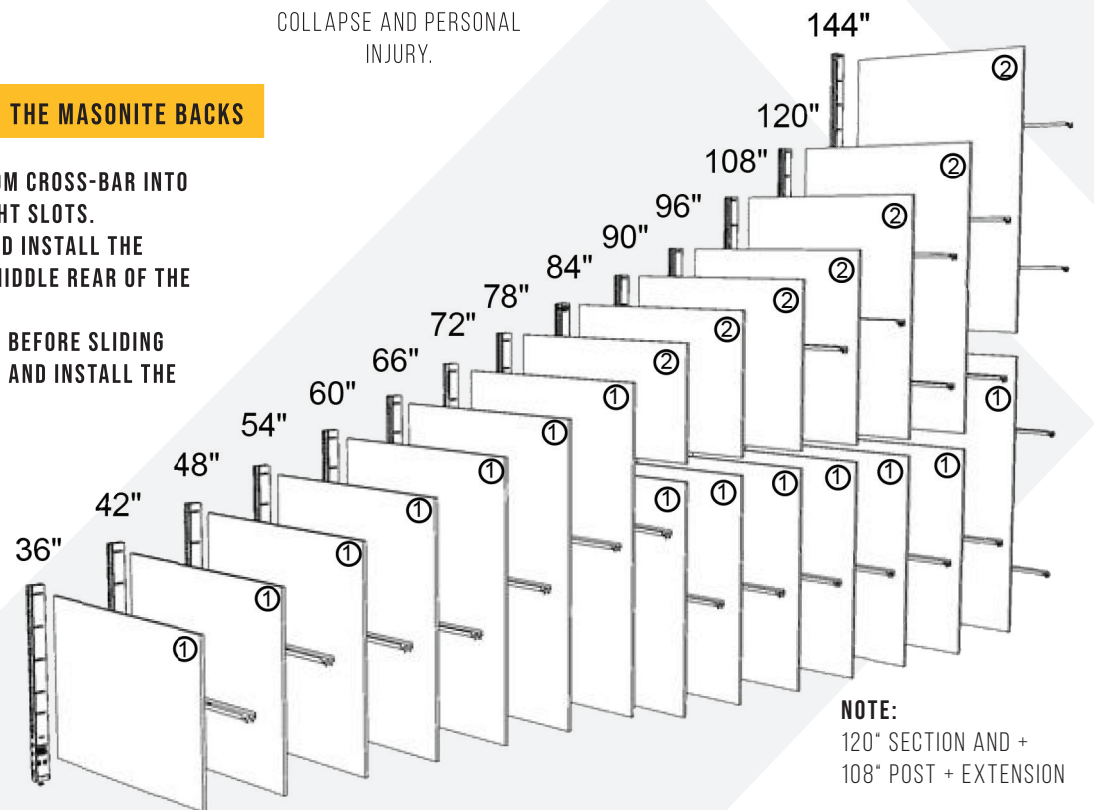
INSTALL THE BASE SHOE AT THE BOTTOM OF THE POST (UPRIGHT). INSERT THE TEETH INTO THE SLOTS AND APPLY PRESSURE BY PUSHING DOWN THE BASE SHOE UNTIL THE LOCKING PIN IS ENGAGED.



INSTALL THE CROSS-BARS AND THE MASONITE BACKS

- 1- INSERT THE TEETH OF THE BOTTOM CROSS-BAR INTO THE LOWER POSITION OF THE UPRIGHT SLOTS.
- 2- SLIDE IN THE MASONITE BACK AND INSTALL THE INTERMEDIATE CROSS-BAR IN THE MIDDLE REAR OF THE BACK.
- 3- INSTALL THE CENTER CROSS-BAR BEFORE SLIDING THE LAST MASONITE BACK IN PLACE AND INSTALL THE TOP CROSS-BAR .

NOTE:
SLIDE MASONITE BACKS IN PLACE SLOWLY.
DO NOT DROP!



NOTE:
120" SECTION AND +
108" POST + EXTENSION

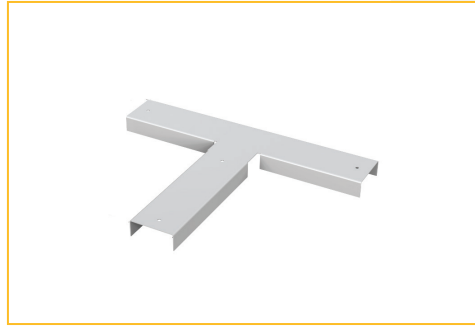
ASSEMBLY

GRID OF THE MASONITE CHART

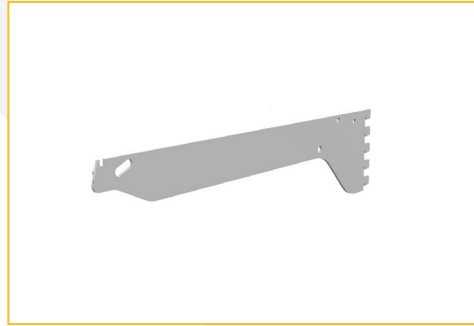
| POST | FIRST MASONITE | SECOND MASONITE | CENTRAL CROSS-BAR | INTERMEDIATE CROSS-BAR |
|--------|----------------------------------|----------------------------------|-------------------|------------------------|
| HEIGHT | HEIGHT | HEIGHT | QUANTITY | QUANTITY |
| 32" | 29 ⁵ / ₈ " | - | - | 1 |
| | 29 ⁵ / ₈ " | - | - | 1 |
| 36" | 29 ⁵ / ₈ " | - | - | 1 |
| | 29 ⁵ / ₈ " | - | - | 1 |
| | 29 ⁵ / ₈ " | - | - | 1 |
| 42" | 35 ⁵ / ₈ " | - | - | 1 |
| | 35 ⁵ / ₈ " | - | - | 1 |
| | 41 ⁵ / ₈ " | - | - | 1 |
| 48" | 41 ⁵ / ₈ " | - | - | 1 |
| | 41 ⁵ / ₈ " | - | - | 1 |
| | 47 ⁵ / ₈ " | - | - | 1 |
| 54" | 47 ⁵ / ₈ " | - | - | 1 |
| | 47 ⁵ / ₈ " | - | - | 1 |
| | 47 ⁵ / ₈ " | - | - | 1 |
| 60" | 53 ⁵ / ₈ " | - | - | 1 |
| | 53 ⁵ / ₈ " | - | - | 1 |
| | 53 ⁵ / ₈ " | - | - | 1 |
| 66" | 59 ⁵ / ₈ " | - | - | 1 |
| | 59 ⁵ / ₈ " | - | - | 1 |
| | 59 ⁵ / ₈ " | - | - | 1 |
| 72" | 65 ⁵ / ₈ " | - | - | 1 |
| | 65 ⁵ / ₈ " | - | - | 1 |
| | 65 ⁵ / ₈ " | - | - | 1 |
| 78" | 23 ⁷ / ₈ " | 47 ⁵ / ₈ " | 1 | 1 |
| | 23 ⁷ / ₈ " | 47 ⁵ / ₈ " | 1 | 1 |
| | 23 ⁷ / ₈ " | 47 ⁵ / ₈ " | 1 | 1 |
| 84" | 29 ⁷ / ₈ " | 47 ⁵ / ₈ " | 1 | 1 |
| | 29 ⁷ / ₈ " | 47 ⁵ / ₈ " | 1 | 1 |
| | 29 ⁷ / ₈ " | 47 ⁵ / ₈ " | 1 | 1 |
| 90" | 35 ⁷ / ₈ " | 47 ⁵ / ₈ " | 1 | 2 |
| | 35 ⁷ / ₈ " | 47 ⁵ / ₈ " | 1 | 2 |
| | 35 ⁷ / ₈ " | 47 ⁵ / ₈ " | 1 | 2 |
| 96" | 41 ⁷ / ₈ " | 47 ⁵ / ₈ " | 1 | 2 |
| | 41 ⁷ / ₈ " | 47 ⁵ / ₈ " | 1 | 2 |
| | 41 ⁷ / ₈ " | 47 ⁵ / ₈ " | 1 | 2 |
| 102" | 41 ⁷ / ₈ " | 53 ⁷ / ₈ " | 1 | 2 |
| | 47 ⁷ / ₈ " | 53 ⁷ / ₈ " | 1 | 2 |
| 108" | 47 ⁵ / ₈ " | 53 ⁷ / ₈ " | 1 | 2 |
| | 47 ⁵ / ₈ " | 53 ⁷ / ₈ " | 1 | 2 |
| 120" | 47 ⁵ / ₈ " | 65 ⁷ / ₈ " | 1 | 3 |
| | 47 ⁵ / ₈ " | 65 ⁷ / ₈ " | 1 | 3 |
| | 47 ⁵ / ₈ " | 65 ⁷ / ₈ " | 1 | 3 |

ACCESSORIES

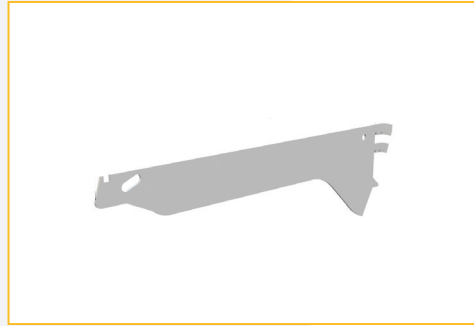
ACCESSORIES



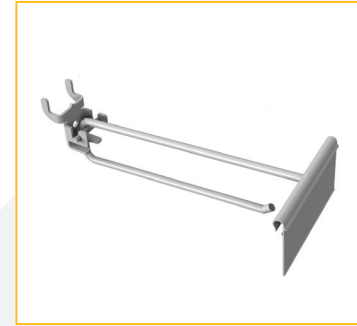
ITEM "T" CAP



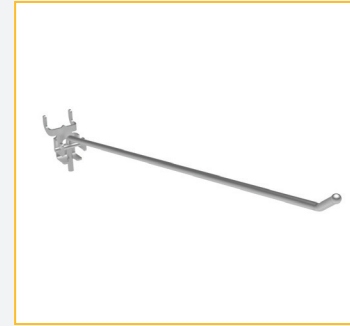
ITEM STRAIGHT BRACKET
LENGTH 6" - 30"
(IN INCREMENTS OF 2")



ITEM INCLINED BRACKET
LENGTH 10" - 30"
(IN INCREMENTS OF 2")



ITEM FLIP SCAN HOOK
LENGTH 4" - 6" - 8" - 10" - 12"



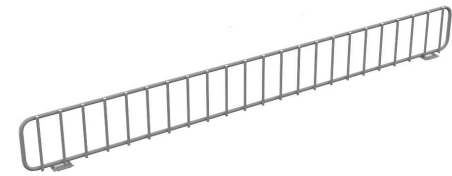
ITEM SINGLE HOOK
LENGTH 4" - 6" - 8" - 10" - 12"



ITEM SLATWALL HOOK
LENGTH 4" - 6" - 8" - 10" - 12"



ITEM HOOK FOR TUBE
LENGTH 4" - 6" - 8" - 10" - 12"



ITEM WIRE FENCE - 2 1/2" H
LENGTH 24" - 30" - 36" - 48"



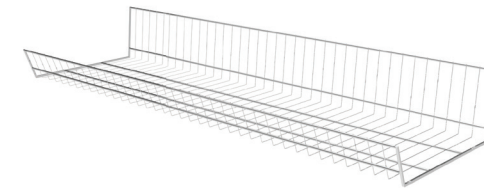
ITEM WIRE DIVIDER
LENGTH 6" - 24"
(IN INCREMENTS OF 2")



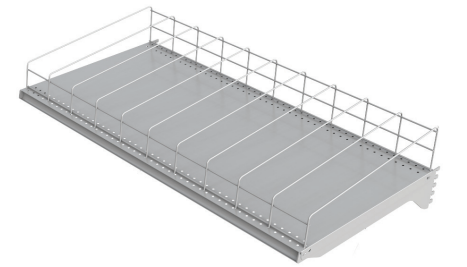
ITEM SUBDIVIDER
LENGTH 4" - 6"



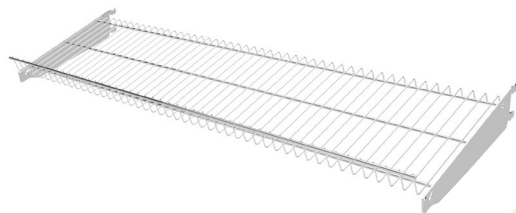
ITEM WIRE BASKET
(VARIOUS DIMENSIONS)



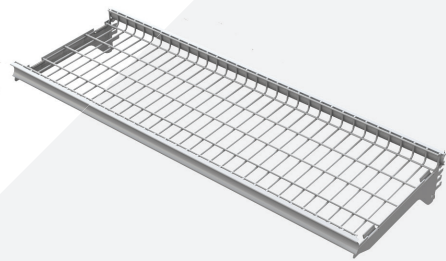
ITEM CHROME WIRE BASKET (NO ENDS)
LENGTH 10" - 12" - 14" - 16" - 18"
(DEPTH)



ITEM SOFT DRINK SHELF
LENGTH 24" - 30" - 36" - 48"



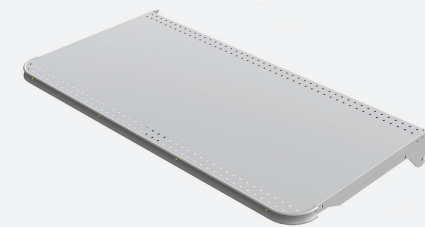
ITEM WIRE SHELF
LENGTH 24" - 30" - 36" - 48"
(LENGTH)



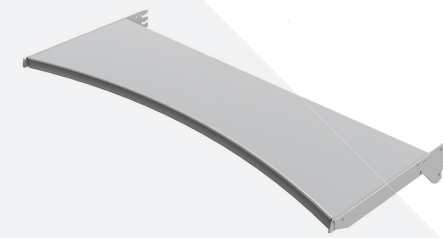
ITEM WIRE SHELF WITH MOLDING
LENGTH 24" - 30" - 36" - 48"



ITEM SHELF WITH SEPARATORS
LENGTH 24" - 30" - 36" - 48"



ITEM ROUND CORNER SHELF
LENGTH 24" - 30" - 36" - 48"



ITEM CONCAVE SHELF
LENGTH 24" - 30" - 36" - 48"



ITEM CONVEXE SHELF
LENGTH 24" - 30" - 36" - 48"

ACCESSORIES

ACCESSORIES



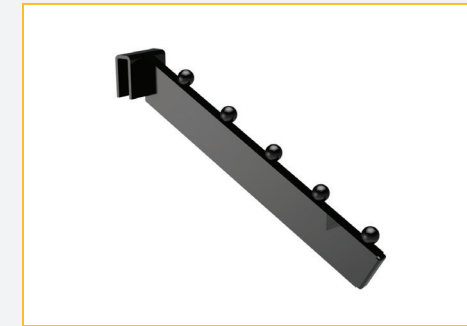
ITEM SIGN HOLDER
FORMAT 24"- 30"- 36"- 48"



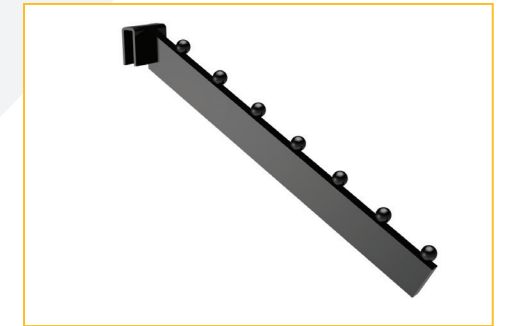
ITEM ADVANCED BAR
DEPTH 1"- 4"- 6"- 8"- 10"- 12"



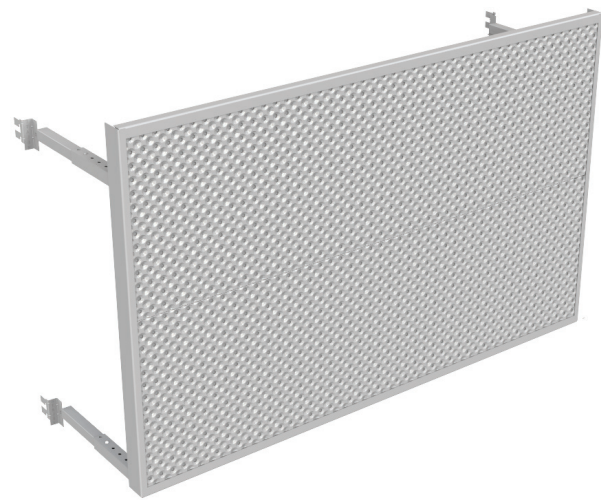
ITEM STRAIGHT CROSSBAR
LENGTH 6"- 8"- 10"- 12"



ITEM 5 BALL CROSSBAR
LENGTH 6"- 8"- 10"- 12"



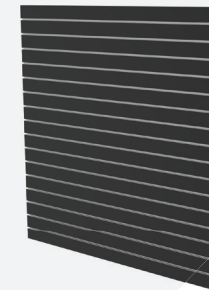
ITEM 7 BALL CROSSBAR
LENGTH 6"- 8"- 10"- 12"



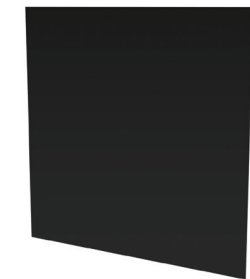
ITEM ADVANCED METAL BACK
WIDTH 24"- 30"- 36"- 48" (VARIOUS HEIGHTS)



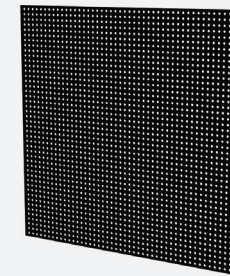
ITEM POST EXTENSION
VARIOUS HEIGHTS



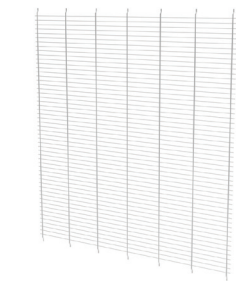
ITEM SLATWALL BACK
WIDTH 24"- 30"- 36"- 48"L X VARIOUS HEIGHTS



ITEM PLAIN BACK (METAL OR MASONITE)
WIDTH 24"- 30"- 36"- 48"L X VARIOUS HEIGHTS



ITEM PERFORATED BACK (METAL OR MASONITE)
WIDTH 24"- 30"- 36"- 48"L X VARIOUS HEIGHTS



ITEM WIRE MESH BACK
WIDTH 24"- 30"- 36"- 48"L X VARIOUS HEIGHTS



ITEM INCLINED SHELF
DEPTH 6"- 8"- 10"- 12"- 14"- 16"- 18"



ITEM SLATWALL SHELF
DEPTH 8"- 10"- 12"



ITEM STRAIGHT METAL SHELF
DEPTH 6"- 8"- 10"- 12"- 14"- 16"- 18"



ITEM "BULLNOSE" METAL SHELF
DEPTH 6"- 8"- 10"- 12"- 14"- 16"- 18"



CONTACT US



8501, Jarry Street East,

Montreal, QC H1J 1H7

T 514 351-2000

TF 1 800 351-3125



1299, Marie-Victorin,

St-Bruno, QC J3V 6B7

T 450 653-1299

TF 1 888 224-BONI



5151, Industriel Boulevard,

Montreal, QC H1G 3H2

T 514 325-9892

TF 1 877 525-9892



FACEBOOK/SJM



LINKEDIN/SJM

MADE IN CANADA