



GENERAL
PRODUCT
CATALOGUE





TABLE OF CONTENTS

E SERIES SHELVING	04 - 07
S SERIES SHELVING	08 - 11
L SERIES SHELVING	12 - 13
E, S & L SERIES ACCESSORIES	16 - 19
RAILFLEX	20 - 21
LIGHT RACKING (WS TYPE)	22
COLD ROOM	23
RACKING SYSTEMS	24 - 27
ACHIEVEMENTS	28 - 31
CONTACT US	32

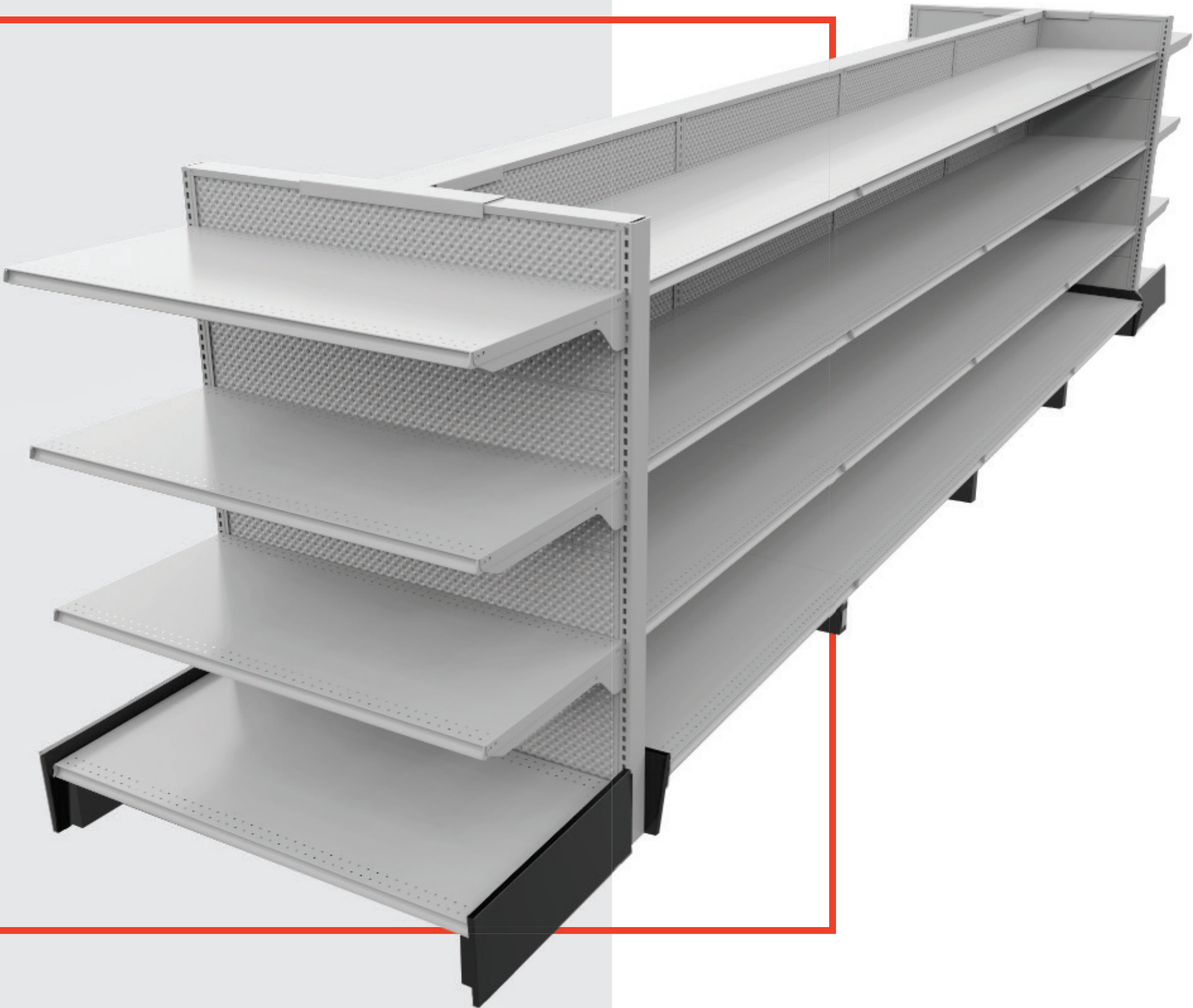
DISCOVER THE ETALEX EXPERIENCE

OUR MISSION REMAINS THE SAME FROM DAY ONE: BE AN EXEMPLARY SUPPLIER THAT PARTICIPATES IN THE REALIZATION OF YOUR PROJECTS, ENSURING QUALITY AND SERVICE THAT EXCEEDS YOUR EXPECTATIONS. PARTNER WITH ETALEX TO MAKE YOUR LIFE EASIER!

WHY CHOOSE ETALEX?

For the reputation of a firm that offers a product line with virtually unlimited possibilities, the far-reaching experience of a fully integrated team of consultants, designers, builders and installers dedicated to finding the best possible solution for managing your commercial space. We have a long tradition of building business relationships that match the quality of our storage systems. Etalex is part of a consortium of 3 manufacturers specializing in commercial equipment, employing more than 400 people dedicated to your complete satisfaction. Our broad market perspective enables us to anticipate your needs and exceed your expectations with the right mix of high quality, forward-thinking products.





E SERIES SHELVING

OUR PRIDE AND JOY.

E Series shelving has been designed to shine a long time. With its unique post and solid or perforated metal backs, this model provides added structural strength. Our E Series, renowned for its lasting durability, can be moved without being completely emptied. Choose the color you want, the configuration of the shelving system, the accessories and there you go!

TECHNICAL SPECIFICATIONS

Post height: 48"- 120" (in increments of 6")

Base shelf: 6"- 30" deep (in increments of 2")

Width: 24"- 48" (in increments of 6")

**Base shelf height:
7 1/4" H. (from floor to the top of the base shelf)**

**Rear back options:
Metal (plain or Perforated), wire mesh & Slatwall**



OPTIONAL BACKS



PLAIN METAL



PERFORATED METAL



SLATWALL



WIRE MESH

BASE SHELF OPTIONS

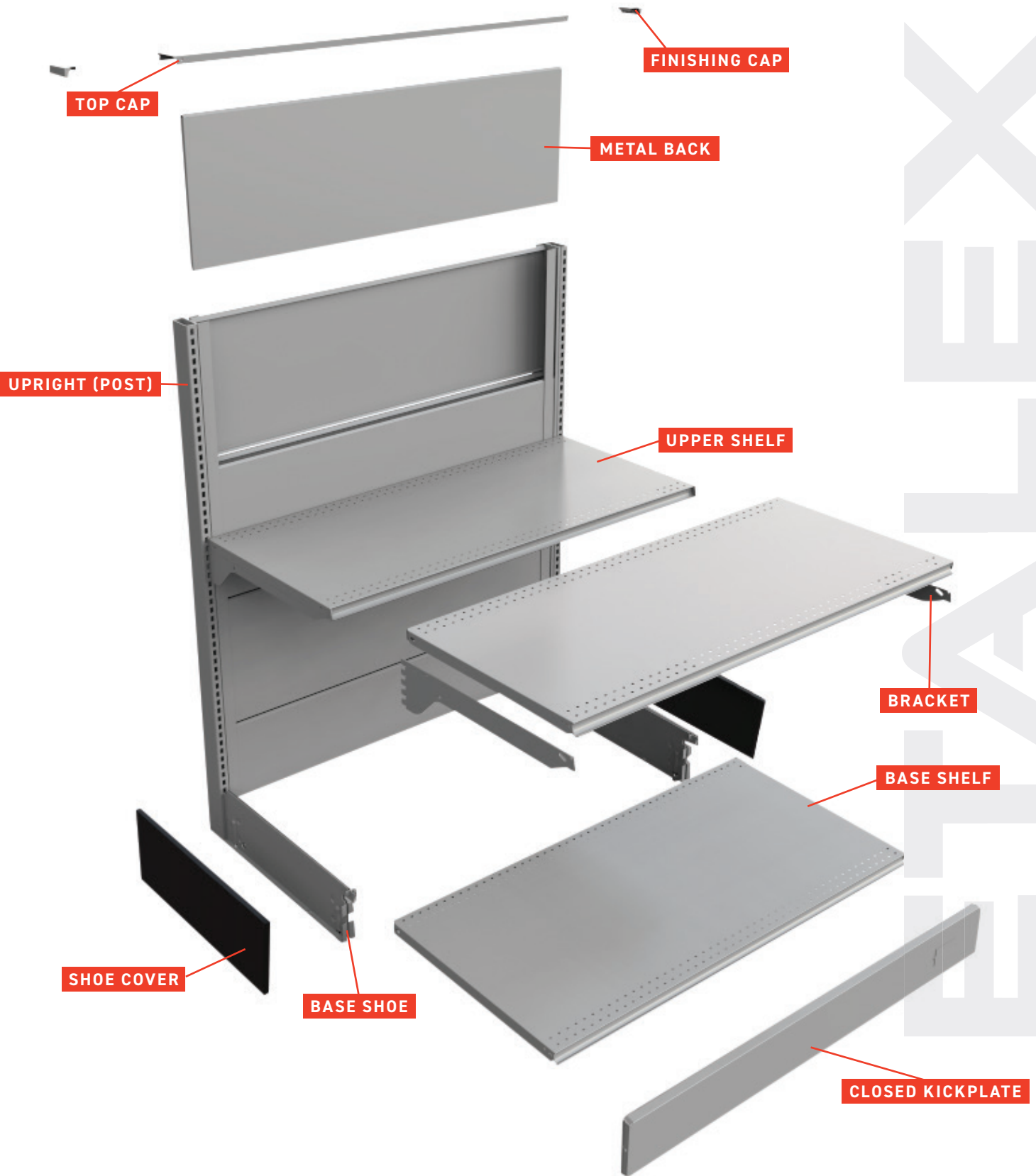


OPEN KICKPLATE



CLOSED KICKPLATE

STRUCTURE - E SERIES





S SERIES SHELVING

S Series shelving really delivers by combining a multi-part post with unbeatable rigidity. Available with either high base 7" or low base with detachable base shelf and our ingenious locking assembly. As a result, it costs a lot less for you to change your aisle layouts. The backs are made of solid or perforated masonite and are available in the most popular colours. From dollar stores to supermarkets, it's an excellent choice. The best store shelves systems for your business.

TECHNICAL SPECIFICATIONS

Post height: 48"- 120" (in increments of 6")

Base shelf: 6"- 30" deep (in increments of 2")

Width: 24"- 48" (in increments of 6")

Base shelf height:
5" H. (from floor to the top of the low base shelf)
7 1/4" H. (from floor to the top of the high base shelf)

Rear back options:
Masonite (plain or Perforated), wire mesh & Slatwall





OPTIONAL BACKS



PERFORATED MASONITE



PLAIN MASONITE



SLATWALL

BASE SHELF OPTIONS

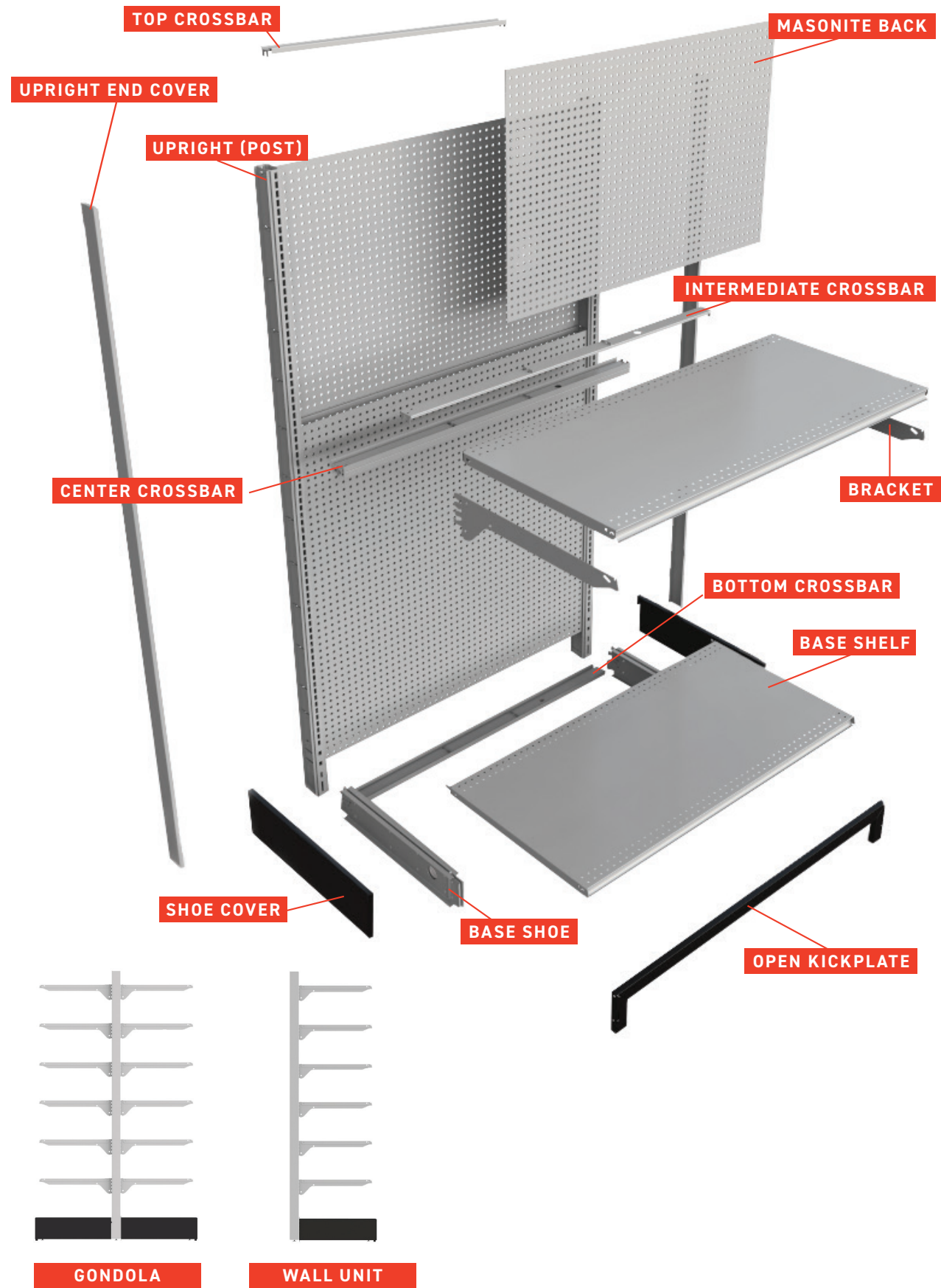


OPEN KICKPLATE



CLOSED KICKPLATE

STRUCTURE - S SERIES





L SERIES SHELVING

The latest innovation from Etalex. simplify your marketing and optimize your commercial space with the L Series. Discover many advantages with its unique and refined appearance.

This lighter and more refined series will give you a new perspective on fixed and mobile systems. Dress it up with all over metal, wire mesh and wood or leave it completely open.

Let your imagination run wild with the versatility offered by the L Series. Be creative and stand out with a unique model.

Ideal for boutiques, convenience stores and retail shops, this series will give you the chance to maximize your walls, your floor spaces and the front of your cash area.

TECHNICAL SPECIFICATIONS

Post height: 48"- 120" (in increments of 6")

Base shelf: 6"- 30" deep (in increments of 2")

Width: 24"- 48" (in increments of 6")

Base shelf height:
7 1/4" H. (from floor to base shelf)

Rear back options:
Masonite (plain or Perforated), wire mesh, Slatwall, metal or leave it completely open

GONDOLAS



MOBILE GONDOLA WITH NO BACKS AND METAL SHELVES



FIXED GONDOLA WITH BASE DECKS, END DISPLAYS AND WIRE SHELVES



FIXED GONDOLA WITH WIRE MESH BACK, BASE DECK & METAL SHELVES



FIXED GONDOLA WITH SLATWALL BACKS, BASE DECK, END DISPLAY & METAL SHELVES



WALL UNIT

L SERIES



AVAILABLE COLORS

AN INFINITE CHOICE OF COLORS
TO MAKE YOUR PRODUCT UNIQUE.

AT ETALEX, WE OFFER AN IMPRESSIVE COLOR RANGE.
LET OUR TEAM OF REPRESENTATIVES GUIDE YOU IN YOUR
CHOICE OF COLORS.

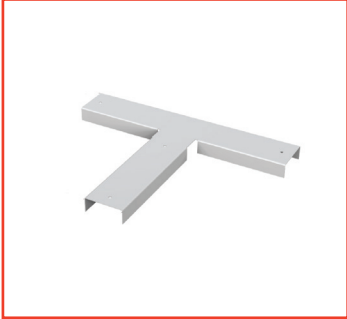
CONTACT US AT 514 351-2000 OR 1 800 351-3125.



ACCESSORIES



ITEM FINISHING CAP
(E SERIES)



ITEM T CAP



ITEM STRAIGHT BRACKET
LENGTH 6" - 30"
(IN INCREMENTS OF 2")



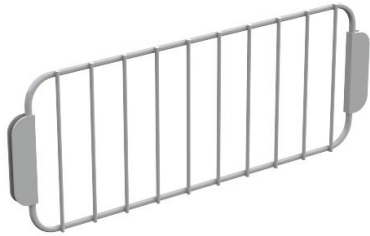
ITEM SLOPED BRACKET
LENGTH 10" - 30"
(IN INCREMENTS OF 2")



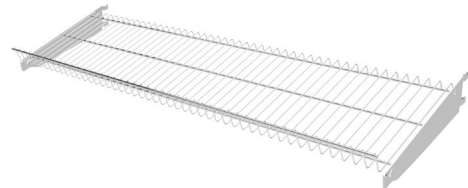
ITEM WIRE FENCE - 2 1/2" H
LENGTH 24" - 30" - 36" - 48"



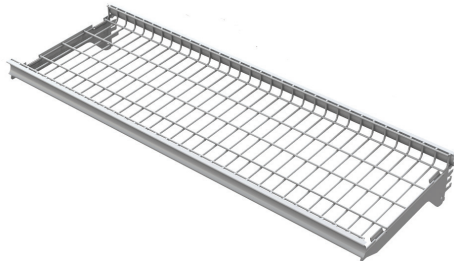
ITEM WIRE DIVIDER
LENGTH 6" - 24"
(IN INCREMENTS OF 2")



ITEM SUBDIVIDER
LENGTH 4" - 6"



ITEM WIRE SHELF
LENGTH 24" - 30" - 36" - 48"
(LENGTH)
DEPTH 16" - 24"
(IN INCREMENTS OF 2")



ITEM WIRE SHELF WITH MOLDING
LENGTH 24" - 30" - 36" - 48"
DEPTH 16" - 24"
(IN INCREMENTS OF 2")



ITEM FINISHING CAP (S SERIES)
VARIOUS HEIGHTS



ITEM FLIP SCAN HOOK
LENGTH 4" - 6" - 8" - 10" - 12"



ITEM SINGLE HOOK
LENGTH 4" - 6" - 8" - 10" - 12"



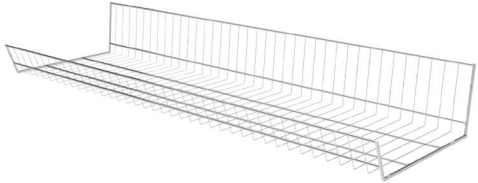
ITEM SLATWALL HOOK
LENGTH 4" - 6" - 8" - 10" - 12"



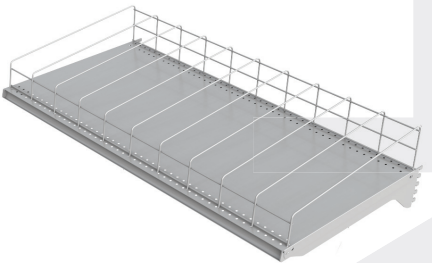
ITEM HOOK FOR TUBE
LENGTH 4" - 6" - 8" - 10" - 12"



ITEM WIRE BASKET
(VARIOUS DIMENSIONS)



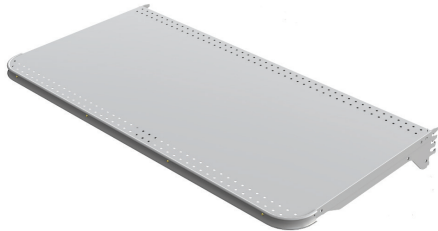
ITEM CHROME WIRE BASKET
(NO ENDS)
LENGTH 24" - 30" - 36" - 48" (LENGTH)
DEPTH 10" - 12" - 14" - 16" - 18"



ITEM SOFT DRINK SHELF
LENGTH 24" - 30" - 36" - 48" (LENGTH)
DEPTH 6" - 30"
(IN INCREMENTS OF 2")



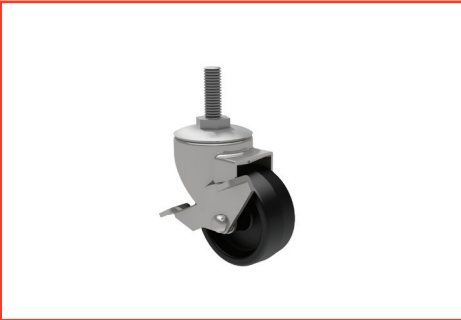
ITEM SHELF WITH SEPARATORS
LENGTH 24" - 30" - 36" - 48"



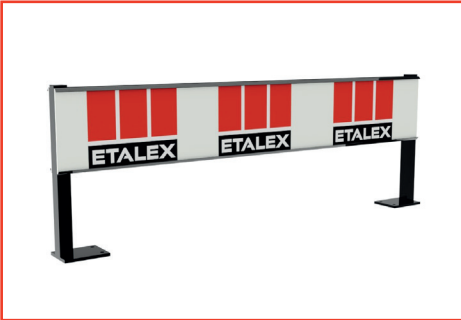
ITEM ROUND CORNER SHELF
LENGTH 24" - 30" - 36" - 48" (LENGTH)
DEPTH 16" - 24"
(IN INCREMENTS OF 2")



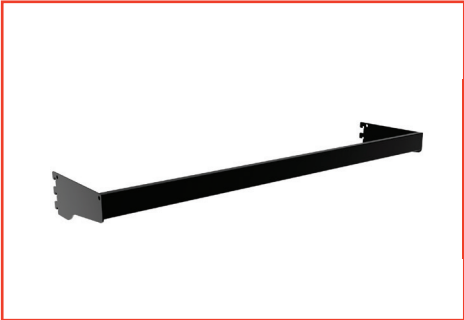
ACCESSORIES



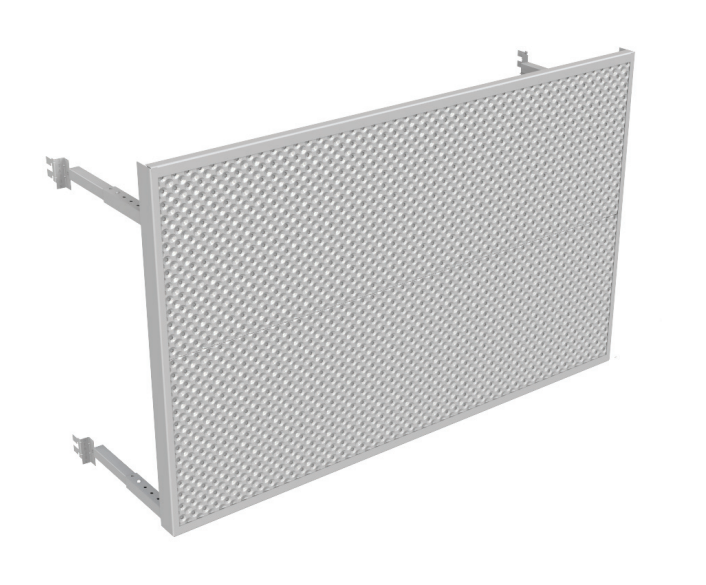
ITEM SWIVEL WHEEL (L SERIES)
FORMAT 24" - 30" - 36" - 48"



ITEM SIGN HOLDER
LENGTH 24" - 30" - 36" - 48"



ITEM EXTENDED BAR
LENGTH 1" - 4" - 6" - 8" - 10" - 12"



ITEM EXTENDED METAL BACK
WIDTH 24" - 30" - 36" - 48" (VARIOUS HEIGHTS)



ITEM EXTENSION DE POTEAU
LENGTH VARIOUS HEIGHTS



ITEM SLOPED SHELF
LENGTH 6" - 8" - 10" - 12" - 14" - 16" - 18" (DEPTH)
LENGTH 24" - 48" (IN INCREMENTS OF 6")

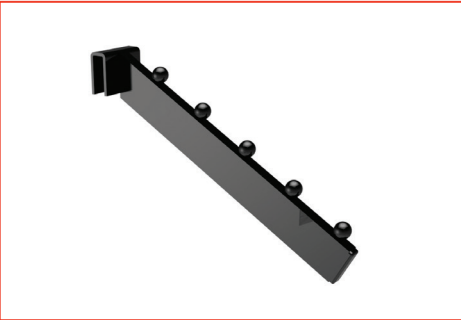


ITEM SLATWALL SHELF
LENGTH 8" - 10" - 12" (DEPTH)

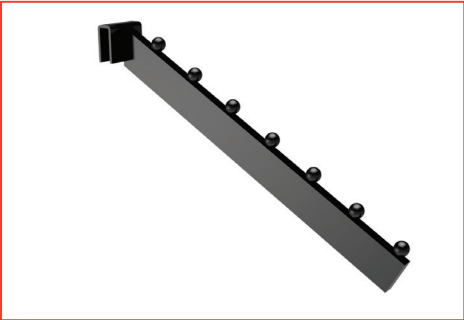
ACCESSORIES



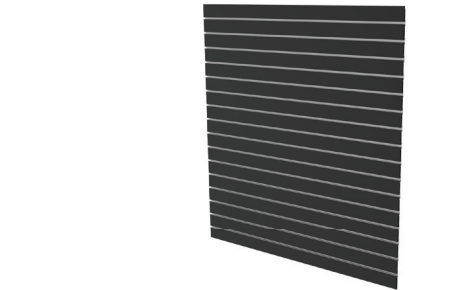
ITEM STRAIGHT CROSSBAR
LENGTH 6" - 8" - 10" - 12"



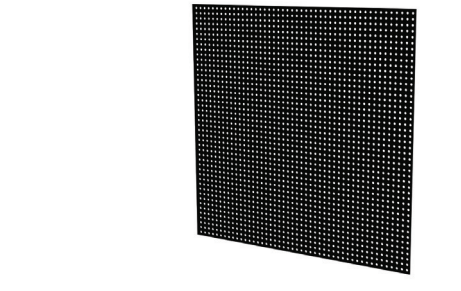
ITEM 5 BALL CROSSBAR
LENGTH 6" - 8" - 10" - 12"



ITEM 7 BALL CROSSBAR
LENGTH 6" - 8" - 10" - 12"



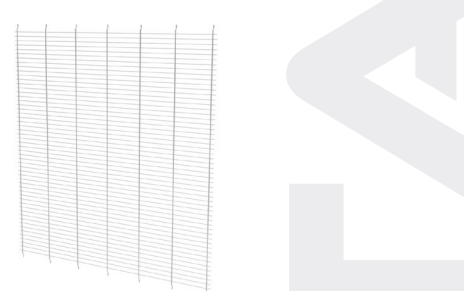
ITEM SLATWALL BACK
WIDTH 24" - 30" - 36" - 48"L X VARIOUS HEIGHTS



ITEM PERFORATED BACK (METAL OR MASONITE)
WIDTH 24" - 30" - 36" - 48"L X VARIOUS HEIGHTS



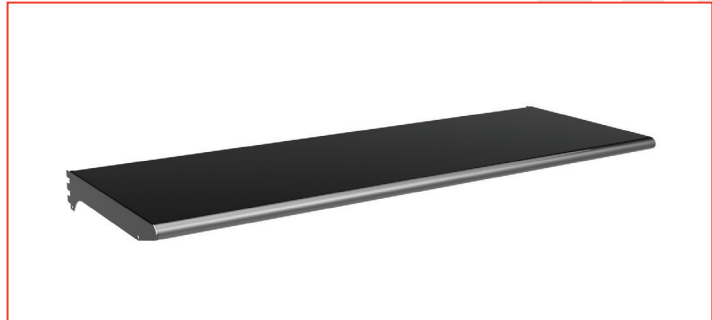
ITEM PLAIN BACK (METAL OR MASONITE)
WIDTH 24" - 30" - 36" - 48"L X VARIOUS HEIGHTS



ITEM WIRE MESH BACK
WIDTH 24" - 30" - 36" - 48"L X VARIOUS HEIGHTS

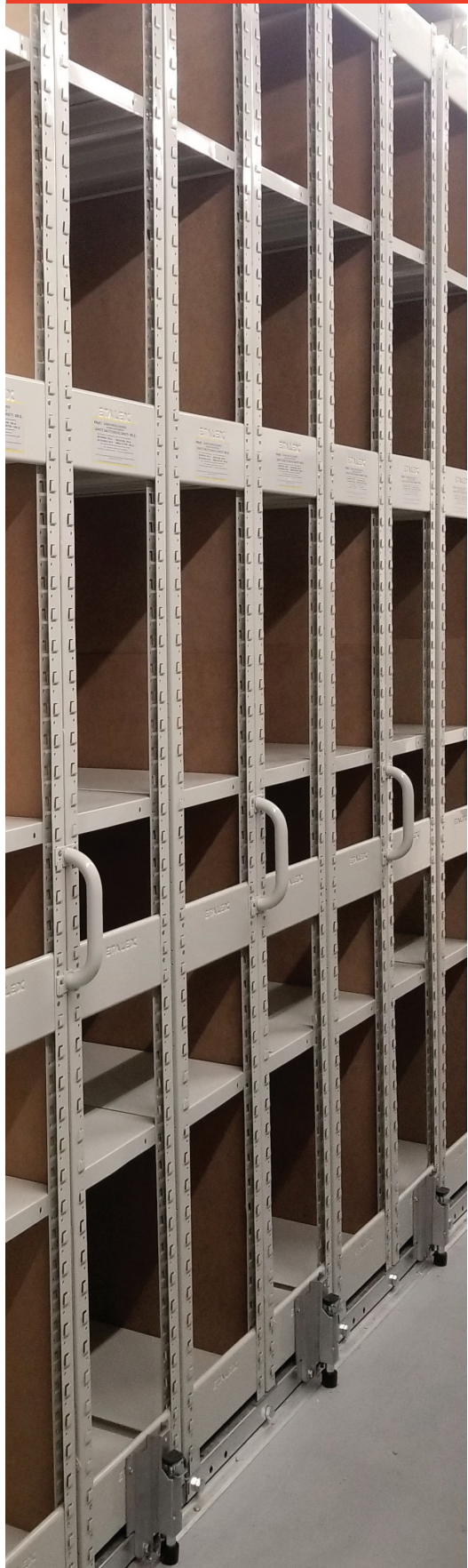


ITEM STRAIGHT METAL SHELF
LENGTH 6" - 8" - 10" - 12" - 14" - 16" - 18" (DEPTH)
LENGTH 24" - 48" (IN INCREMENTS OF 6")



ITEM "BULLNOSE" METAL SHELF
LENGTH 6" - 8" - 10" - 12" - 14" - 16" - 18" (DEPTH)
LENGTH 24" - 48" (IN INCREMENTS OF 6")

STORAGE UNITS



FIXED UNIT
WITH OPENED
END FRAMES



OPENED FIXED UNIT
+ HANGBAR
+ MASONITE BACK



OPENED FIXED UNIT
+ DOORS MASONITE
BACK



OPENED MOBILE
UNIT +
MASONITE BACK

RAILFLEX

RAILFLEX STORAGE

The best solution for maximising commercial space from floor to ceiling is Railflex. Specially designed by our team for light storage duties, Railflex shelves also allow you to store your heaviest items. Our HD system is more robust and meets the highest safety standards. Whether fixed or mobile, Railflex structures adapt to all types of spaces, even narrow ones, such as back stores and archive rooms. Both models, whether used together or separately, make your entire space more cost effective. The shelves can be installed at different heights allowing you to change the configuration at any time.

INDUSTRIAL FRAME

Material: Painted steel 18GA

Standard Dimensions:
12" - 14" - 15" - 16" - 18" - 22" - 24" depth
Height: 60" - 144" (in increments of 12")

Side reinforcements are riveted. Closed sides also available

HD posts: 11GA painted steel with double front impact reinforcements

INDUSTRIAL SHELF

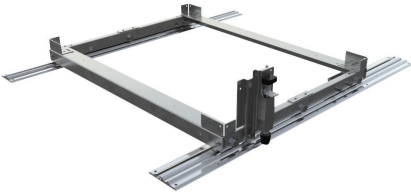
Material: Painted steel 22 GA

Standard Dimensions:
12" - 14" - 15" - 16" - 18" - 22" - 24" depth
- Width: 36" - 42" - 48" Other dimensions available on demand
- Capacity: 400 pounds with uniformly distributed load.
Double load capacity with HD system

CARRIAGE

Material: Galvanized steel

Standard width: 24" - 28" - 30" - 32" - 36" - 44" - 48"
Height: 36" - 48" - 72" - 84" - 96"
- Foot brake & 2 anti-tilt brackets on all mobile sections
- Capacity: 1200 pounds per mobile section



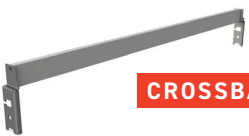
CRADLE, BRAKE, ANTI-TILT
AND RAIL (MOBILE UNITS)



SHELF DIVIDERS

OPEN END
FRAME

CLOSED END
FRAME



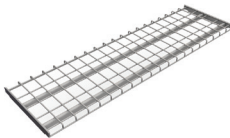
CROSSBAR FOR HOOKS

HANGBAR &
BRACKETS



METAL
PERFORATED SHELF

WIRE SHELF



METAL SHELF

LIGHT RACKING (WS TYPE)

LIGHT RACKING
(WS TYPE)

More delicate and discreet than our heavy storage systems the light storage (Type WS) still offers what you need. It can replace our standard commercial shelves in retail stores, grocery stores or mini-warehouses. It provides higher load capacity than shelving system without the appearance of a heavy storage system.



LIGHT RACKING WS

Depth range: 24" - 30" - 36" - 42" - 48"
Height of uprights: 48" - 54" - 60" - 66", etc... (in 6" increments)

RACKING BEAM

Types and size of beams: box 2", step 2 1/4" and 3"
Beam lengths: 48" - 54" - 60" - 66" - 72" - 78" - 84" - 90" - 96" - 102" - 108" - 114" - 120"

Transversal channels = 20Ga. / longitudinal channels = 16Ga. / frames = 14 Ga.

COLD ROOM SHELVING

COLD ROOM SHELVING

For walk-in coolers, freezers and beer cave units, we have the shelving system that meets your needs. Available either in stainless steel, galvanized steel or painted in compliance with NSF-approved steel electroplating standards, our custom-made cold room shelving will fulfill your needs and meet government food safety standards. The sturdy Etalex storage system is designed to ensure optimal capacity utilization for your heavy goods. For refrigerator doors, you have a choice of straight metal shelves or slanted shelves between vertical door mullions

STAINLESS STEEL



HEIGHT OF STAINLESS STEEL POSTS
84" - 120"
HEIGHT OF POST EXTENTIONS
9"- 40"
PLATFORM LENGTH
24", 30", 36", 42", 46"
DEPTH OF SHELVES 18", 24"

GALVANIZED STEEL



HEIGHT OF GALVANIZED POSTS
72" - 126"
HEIGHT OF POST EXTENTIONS
9" - 48"
PLATFORM LENGTH
24", 30", 36", 42", 46"
DEPTH OF SHELVES 12", 18", 24"

PAINTED



HAUTEUR DE POTEAUX GALVANISÉ
72" - 126"
HEIGHT OF POST EXTENTIONS
9" - 48"
PLATFORM LENGTH
24", 30", 36", 42", 46"
DEPTH OF SHELVES 12", 18", 24"

LIGHT RACKING WITH PAINTED METAL



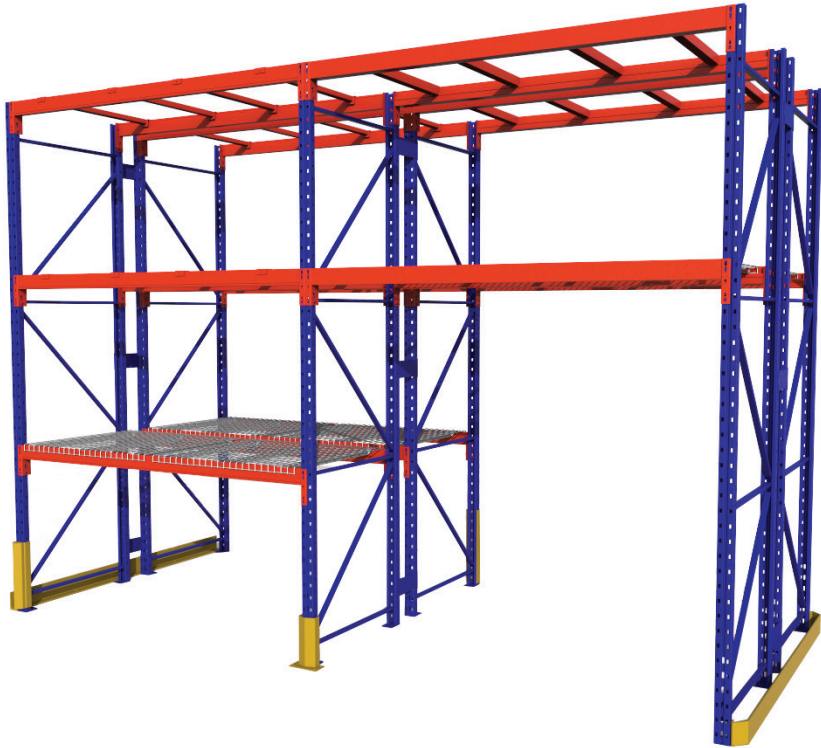
LIGHT RACKING WITH GALVANIZED METAL



WAREHOUSE RACKING

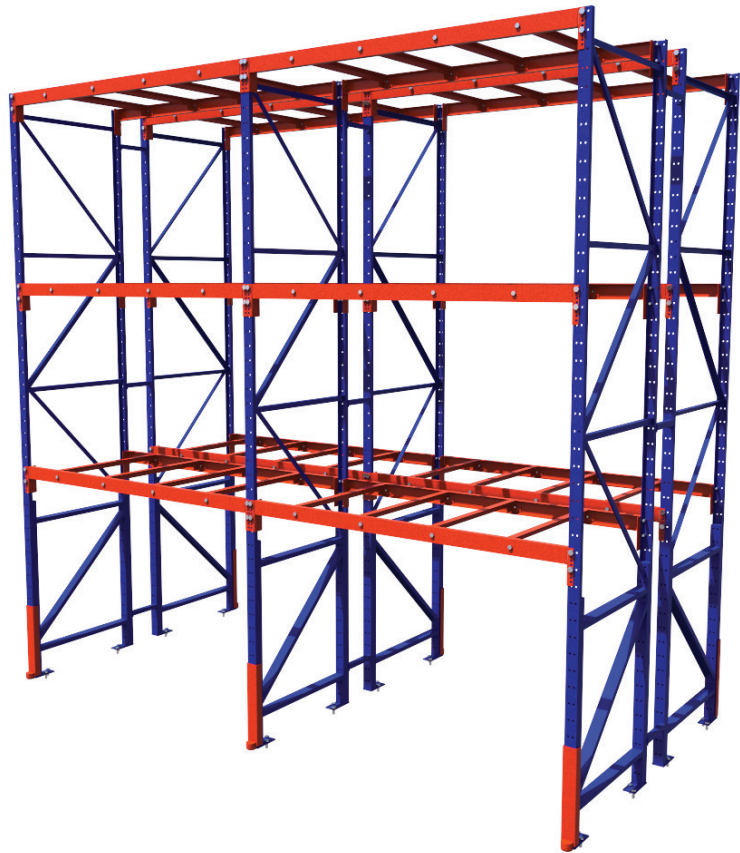
WAREHOUSE STORAGE CONVENTIONAL

Our cold roll rack system, also called roll forming, is widely used. Conventional storage offers a great level of flexibility. It's an easy, quick and safe solution that is often used to store various types of products. The layout of our slats and beams has been specially designed to be adapted and to meet your needs. The pallets can be accessed at any time, without needing to move the merchandise.



WAREHOUSE STORAGE STRUCTURAL

Our structural pallet racking remains the best solution for highly frequented locations that present a risk of damage or high surges. Our robust and ultra-resistant construction is perfectly adapted to handling heavy loads and forklift traffic. Crafted with conventional parts, our hybrid shelving offers you a storage system that can finally meet your needs



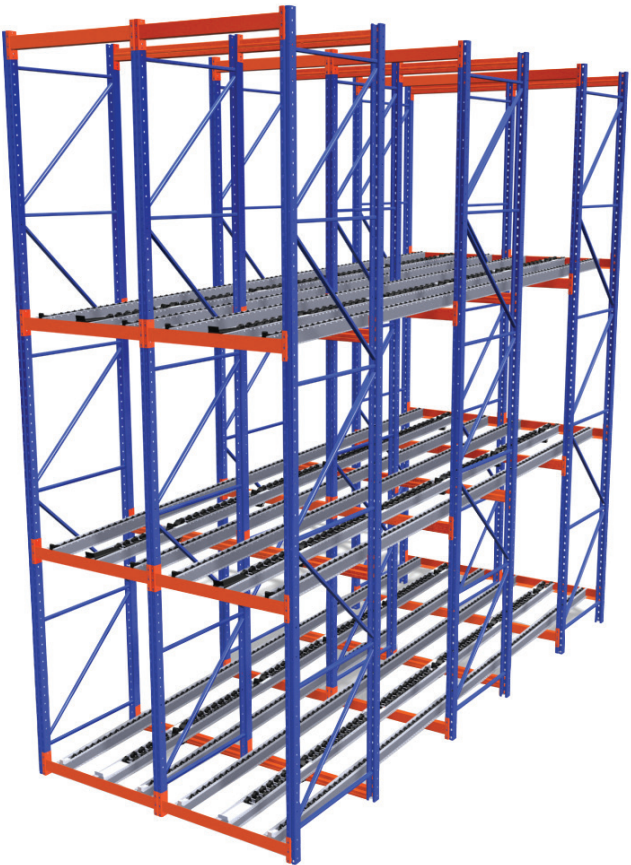
WAREHOUSE RACKING PUSH BACK

Push-back pallet racking is an ideal choice for reducing the time it takes to load and unload stock. Its main advantage: the pallets can be accessed quickly at all times. When loading, the pallet is pushed towards the bottom with those already in place on the runners. The opposite occurs when unloading: the pallets slide to the side accessible to the forklift trucks. This system allows you to manage your inventory on a last in-first out basis.



WAREHOUSE RACKING PALLET FLOW

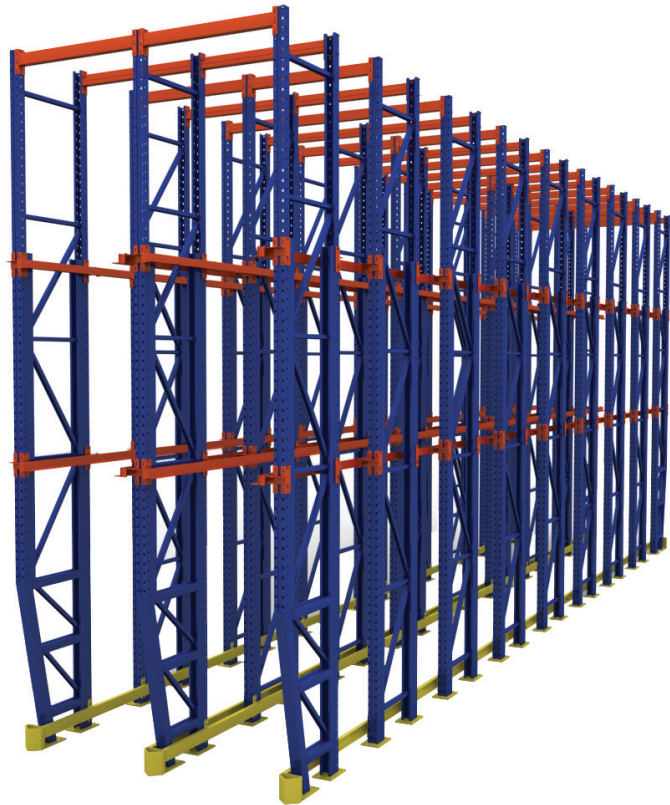
Pallet flow pallet racking automatically manages your inventory on a first in-first out (FIFO) basis. This is the perfect solution for managing stocks with high turnover rates, such as perishable products. The roller belt makes it possible to place a high number of pallets in depth.



WAREHOUSE RACKING

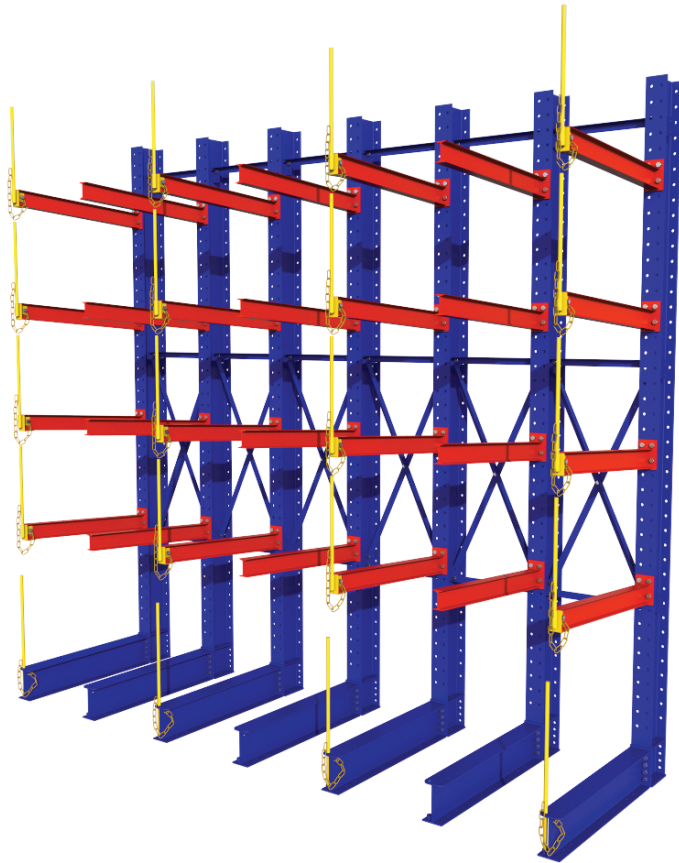
WAREHOUSE STORAGE
DRIVE-IN

Our drive-in pallet racking gives you optimal storage space at a lower cost. This allows you to maximize the number of rows. Our storage systems are durable and designed to allow forklifts to load and unload pallets from the aisles.



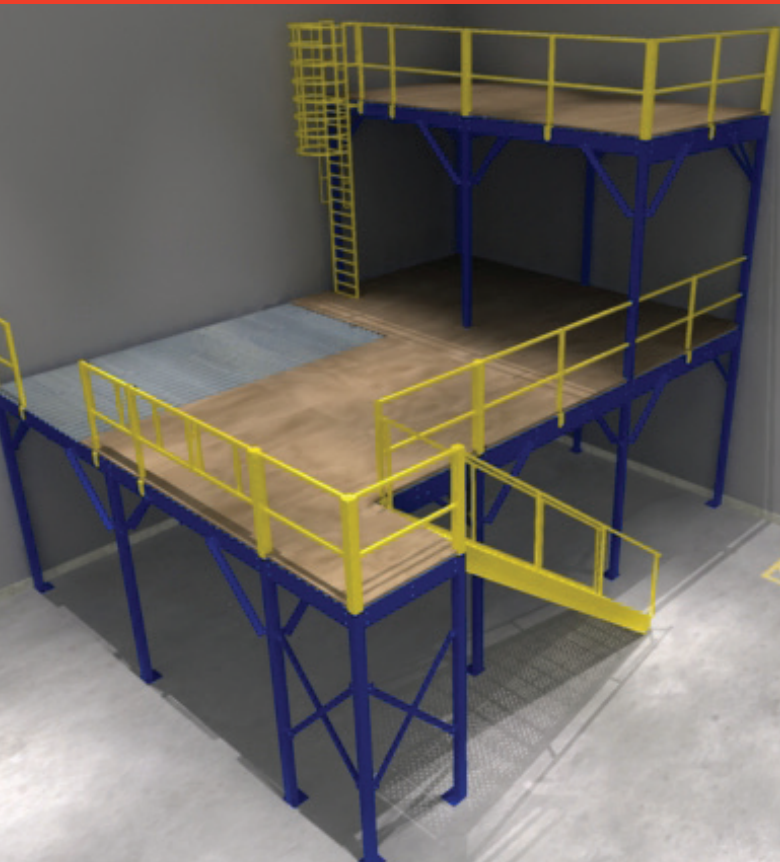
WAREHOUSE STORAGE
CANTILEVER

The cantilever setup is commonly used for storing heavy, long or irregularly shaped items such as metal sheets, plastic tubes, wood planks, construction materials, etc. Our cantilever shelving is ultras resistant, self-supporting and fully adjustable. Our designs are reliable and meet the highest industry standards.



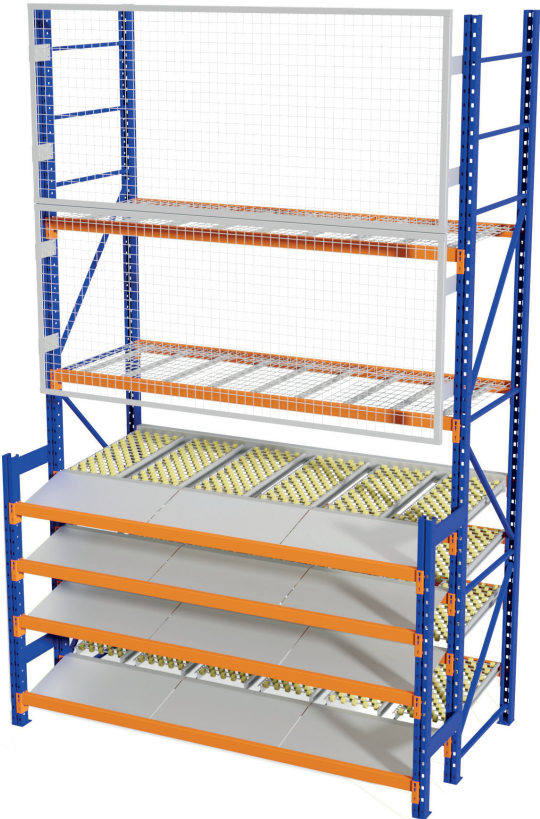
WAREHOUSE STORAGE
MEZZANINE

Industrial mezzanines allow you to increase available storage space and practically and efficiently optimize the space available in an area. Mezzanines can be designed and personalized to meet your needs. Mezzanines are typically used to maximize floor space, such as in parts stores and distributions centers.



WAREHOUSE RACKING
CARTON FLOW

Carton flow pallet racking is an excellent solution for efficiently organizing the storage of small and medium-sized boxes. The shelving system for this racking is designed with a decline and rolling mechanisms that allow boxes loaded from the rear to slide towards the front. Your stock is automatically managed according to the first in-first out principle (FIFO).



ACHIEVEMENTS



WAREHOUSE



PET STORE



PET STORE



GROCERY STORE

ACHIEVEMENTS



AUTOMOTIVE



HARDWARE STORE



RETAIL BUSINESS



RETAIL BUSINESS



RETAIL BUSINESS

PORTFOLIO



WAREHOUSE



GROCERY STORE



GROCERY STORE



BEER & WINE

PORTFOLIO



CONVENIENCE STORE - COLD ROOM



BACK STORE



WAREHOUSE



WAREHOUSE



WWW.ETALEX.CA

CONTACT US

ANJOU PLANT

8501, Jarry Street East,
Montreal, QC H1J 1H7

T 514 351-2000

TF 1 800 351-3125

SAINT-BRUNO PLANT

1299, Marie-Victorin,
St-Bruno, QC J3V 6B7

T 450 653-1299

TF 1 888 224-BONI



FACEBOOK/ETALEX



LINKEDIN/ETALEX



YOUTUBE/ETALEX

MADE IN CANADA

